



Powys Teaching Health Board
Primary Care Optometry
Eye Health Needs Assessment
March 2025

Contents

Chapter	Description	Page
1.	Executive Summary	3
2.	Introduction	4
3.	Powys Population Eye Health	9
4.	WGOS Service Provision	11
5.	Third Sector Support Services Resources	18
6.	Increasing Demand for Eye Care Services	19
7.	Current Secondary Care Eyecare Pathways	21
8.	DDA Compliance	22
9.	Welsh Language	23
10.	Workforce	24
11.	Powys Clusters	25
12.	Transition/Transformation Plans to Meet Future Eye Health Needs	44
13.	References	48

1. Executive Summary

To support the eye care needs of communities, in 2024 Welsh Government imposed a duty on Local Health Boards to conduct a primary care Optometry eye health needs assessment every three years to ascertain the needs of the public in terms of eye care provision in both primary and secondary care and the opportunities that primary care optometry pathways and services can support local need. It identifies opportunities to support the 'shift left' agenda, providing care closer to home within primary care optometry, and is not a full assessment of secondary care and planned care Powys ophthalmology services.

Higher levels of clinical services identified by the local eye care needs assessments will be delivered on a Cluster level to bolster this provision. Taken together, the needs assessment combined with delivery on a Cluster footprint will ensure that local population needs will be fully considered and delivered against.

This eye health needs assessment is prepared in accordance with Legislative Direction and relates to primary care optometry services (only) and includes all of WGOS 1–5 provided under arrangements made by the health boards and includes:

- a. an assessment and summary of the provision of WGOS 1–5;
- b. an assessment and summary of the demand for WGOS 1–5;
- c. proposals for further ophthalmic services that may be needed to meet demand for those services;
- d. an outline of the prevalence and impact of vision impairment in each Local Health Board's area, including the aetiology, risk factors, demographics and public health and other consequences of vision impairment;
- e. an analysis of the information provided by all data sources;
- f. a map that identifies the premises at which any or all of WGOS 1–5 are provided in each Local Health Board's area.

In preparing this Eye Health Needs Assessment, the Health Board

- a. has regarded, in so far as it is practicable to do so, the following matters—
 - (i) the demography of its area,
 - (ii) any different needs of different localities within its area,
 - (iii) the ophthalmic services provided under arrangements with any neighbouring Local Health Board which affect the need for ophthalmic services in its area,
 - (iv) any other NHS services provided in or outside its area (which are not covered by sub-paragraph (iii)) which affect the need for ophthalmic services in its area,

(v) any relevant information provided to the Local Health Board either under the Legislative Directions or the 2023 Regulations, and

b. has taken into account the likely future needs having regard to changes to the number of people in its area who will require any or all of WGOS 1–5.

2. Introduction

2.1 Wales population eye health

Wales spans an area of approximately 20,700 km² and has a population of roughly 3.1 million.

It is served by seven distinct Local Health Boards (LHBs). The boundaries of these LHBs vary significantly in size, from less than 500 km² for Cardiff & Vale University LHB to over 6,000 km² for Betsi Cadwaladr University LHB. The populations within these LHBs also differ, with Powys Teaching LHB housing around 134,500 residents and Betsi Cadwaladr University LHB accommodating approximately 692,000. The more urban and post-industrial regions represented by Aneurin Bevan, Cardiff and Vale, Cwm Taf Morgannwg, and Swansea Bay University LHBs account for 60% of Wales' population, yet only cover 17% of its land area.

In contrast, Powys Teaching, Betsi Cadwaladr, and Hywel Dda University LHBs are largely composed of rural areas.

In the UK (population circa 68.27 million), approximately 1.93 million individuals are estimated to be living with vision impairment or blindness caused by conditions such as age-related macular degeneration (AMD), cataracts, diabetic eye disease, glaucoma, and uncorrected refractive errors.

Vision impairment can significantly diminish quality of life by hindering a person's ability to carry out daily tasks, restricting mobility, and affecting independence. Additionally, individuals of working age with vision impairment are less likely to be employed compared to their sighted counterparts. These challenges can further limit a person's ability to engage with the world, leading to social isolation and feelings of loneliness.

Unsurprisingly, vision impairment imposes a substantial socioeconomic burden, which was estimated at £15.8 billion in the UK in 2013.

Wales is projected to see an ageing population over the next two decades, leading to a higher prevalence of age-related eye diseases. From 2023 to 2033, the number of individuals aged over 80 is expected to rise by 16.0%, and by 2043, this increase will

reach 56%. By 2033, the anticipated changes in incidence and prevalence for various conditions are as follows:

- Cataracts: incidence is expected to rise by 11%, with prevalence increasing by 12.5%
- Glaucoma: incidence is projected to increase by 11.7%, and prevalence by 13%
- Retinal diseases: incidence is anticipated to grow by 13%, with prevalence increasing by 12.6%

2.2 NHS Wales

NHS Wales is the public funded National Health Service of Wales providing healthcare to some 3 million people who live in the country. The Welsh Government sets the health care strategy and NHS in Wales delivers that strategy and services via the seven Local Health Boards, three NHS Trusts and two Special Health Authorities. The NHS has 5 core principles:

- Putting quality and safety above all else,
- Integrating improvement into everyday working,
- Focusing on prevention, health improvement and inequality,
- Working in true partnerships and
- Valuing all that work for the NHS.

Key strategic drivers for NHS Wales include:

➤ **The Well-being of Future Generations (Wales) Act 2015**

The Well-being of Future Generations (Wales) Act 2015 invites collaboration across services and sectors and with the individual to improve wellbeing and reduce demand on services.

Optometry Contract reform embedded collaboration of services and sectors. Optometrists and dispensing Opticians work closely with patients and other health care professionals to improve eye health and general health, ensuring preventative advice is given to improve wellbeing and reduce demand on secondary care.

➤ **A Healthier Wales**

This policy encourages a more holistic approach to health and social care and supports the use of community-based services rather than secondary care where appropriate. The quadruple aim outlines the use of a motivated workforce, the

higher value of care being provided, the improved population health and wellbeing, and the improved quality and increased access to care.

➤ **Future Approach for optometry services**

This transformation paper outlines the expectations of the Welsh Government for the delivery of eye care services over the next decade. To inform this approach, considerations have been made based on past and present experiences, as well as an analysis of current population access, demand, treatments, technologies, and outcomes.

2.3 Wales General Ophthalmic Services

Wales General Ophthalmic Services (WGOS) were introduced on the 20th October 2023, with unification of the service architecture, governance and evaluation across Wales to provide care closer to home and ensure that people only attend hospital eye services when required. WGOS is a Primary Care Optometry service delivered from both fixed location premises in the community and closer to/in homes via mobile practices. WGOS is a tiered service comprising of the following:

- WGOS 1: eye examinations and patient management plan.
- WGOS 2: made up of three bands:
 - Band 1 – Acute eye care and referrals for examination from another healthcare professional.
 - Band 2 - Further examinations following WGOS 1 to inform or prevent a referral.
 - Band 3 - Follow up examinations to WGOS 2 Band 1 and Cataract Post-operative Assessments.
- WGOS 3:
 - Assessments for those with low vision and providing low vision aids where appropriate, as well as holistically supporting the patient and providing rehabilitative support.
 - Certification of Vision Impairment for patients whose leading cause of vision loss is Dry Age-Related Macular Degeneration
- WGOS 4: examinations for patients who would previously have been referred to/or managed in the Hospital Eye Service (HES) instead remain in primary care for further enhanced assessment as part of an agreed referral refinement or monitoring pathway for patients:
 - with or with suspected medical retina conditions
 - with or with suspected glaucoma or ocular hypertension; and
 - who are at risk of retinopathy due to taking hydroxychloroquine or chloroquine

- WGOS 5: examinations in primary care for acute eye conditions that require management by an independent prescriber optometrist to reduce the need for onward referrals to Hospital Eye Services.
- NHS Optical vouchers: financial support for the provision of spectacles or contact lenses to patients in eligible categories determined by Welsh Government.

2.4 Welsh Index Multiple Deprivation

The Welsh Index of Multiple Deprivation (WIMD) is the Welsh Government's official measure of relative deprivation for small areas in Wales. It identifies areas with the highest concentrations of several different types of deprivation. Deprivation is the lack of access to opportunities and resources, which we might expect in our society. WIMD ranks all small areas in Wales from 1 (most deprived) to 1,909 (least deprived). It is a National Statistic produced by statisticians at the Welsh Government. Small areas are Census geographies called Lower-layer Super Output Areas (LSOAs).

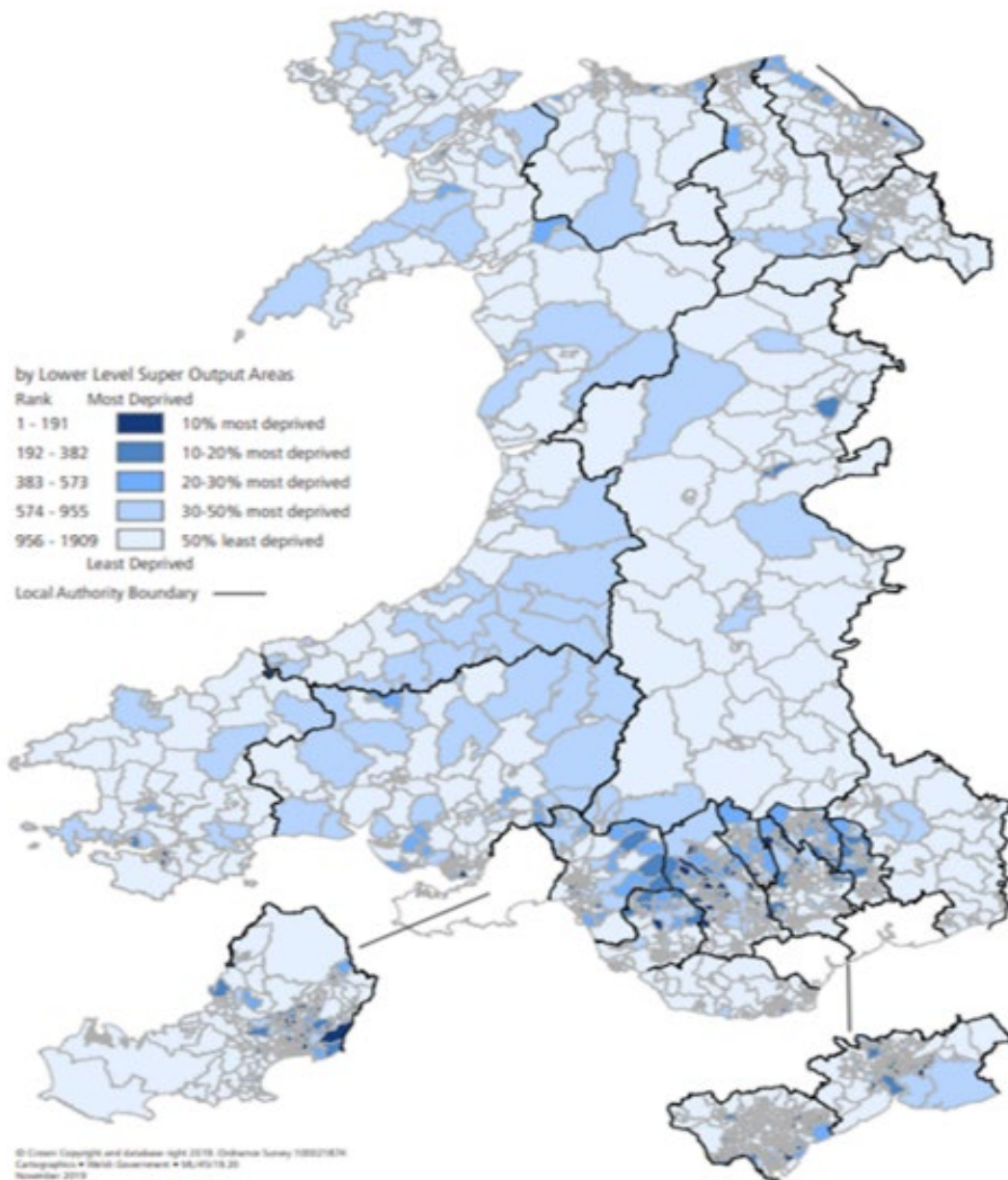
The full index is updated every 4 to 5 years. The most recent index was published in 2019. There are numerous indicators that feed into WIMD. Some of these are updated annually (when possible), some periodically, some only for the overall WIMD update and some only when census data becomes available.

The Welsh Index of Multiple Deprivation statistics look at:

- Income Deprivation
- Employment
- Health
- Education
- Access to Services
- Housing
- Community Safety
- Physical Environment

The health domain measures a lack of good health. The indicators are:

- People with a GP-recorded diagnosis of a Chronic condition (indirectly age-sex standardised)
- People with a GP-recorded diagnosis of a Mental health condition (indirectly age-sex standardised)
- Cancer Incidence (indirectly age-sex standardised)
- Limiting Long-Term Illness (indirectly age-sex standardised)
- Premature Death Rate (death of those under the age of 75)
- Children aged 4-5 who are obese
- Low Birth Weight, single births (live births less than 2.5kg)



The indicators above are age-sex standardised to adjust for the expected prevalence of disease within the underlying population. This allows the index to identify areas where health deprivation exists beyond the effect of age and sex.

The association between deprivation and health is clearly apparent across Wales especially in the post-industrial valley communities in South Wales. Here poorer health outcomes are significantly worse than Wales as a whole.

3. Powys population eye health

3.1 Our population

Powys Teaching Health Board (PTHB) covers the Local Authority of Powys, which encompasses a quarter of the landmass of Wales. As of the 2021 Census, there was approximately 133,000 people in Powys¹.

The Powys Population Assessment² and Powys Wellbeing Assessment³ have been updated and provide a refreshed understanding of life in the County. Insights from these two core sources of analysis have been used to inform the Health Board's Integrated plan⁴ and some of the key population findings are summarised below:

- Powys is at the forefront of the issue of ageing population. The average age is higher than Wales and UK, with 28% of the population over 65 years old and this is predicted to increase.
- 75% of areas in Powys are in the top 30% most deprived in Wales in terms of Access to Services.
- There is a rural economy with low-income employment.
- 79.2% of people are economically active and 17.8% are self-employed, but unemployment has grown and 5% of working-age people are unemployed.
- The average household income is lower in Powys at £33,458 (compared to Wales £34,700, UK £40,257).
- 55% of households in Powys earning below the County average and 4,088 families live in absolute poverty.
- In relation to the quality of housing, 48% of homes have a poor energy rating.
- The Housing Demand register indicates unmet need for affordable housing of the right size and geographies.
- Surveys of wellbeing often show high levels of people feeling happy and in good health.
- Life expectancy for men and women is higher than the Wales average but there are variations in the county. People in Powys live longer in good health than the population of Wales and the UK overall.
- 20% of those seeking support from PAVO (Powys Association of Voluntary Organisations) described loneliness and isolation.
- 12% of the population are unpaid carers.
- Powys has a low population density of 26 people per square km (compared to Wales 153 per km² and Cardiff 2620 per km²).
- The number of elderly people in Powys is projected to rise by 15%, whilst the working age population is projected to fall by 3,200 (4%).

Powys' population density differs across the thirteen localities that make up the Local Authority¹.

High Density Areas include:

- Newtown locality (North Cluster) with 78 people per km² (highest density)
- Welshpool and Montgomery locality (North Cluster) with 64 people per km² (second highest)
- Ystradgynlais (South Cluster) is the third highest with 61 people per km².

Low Density Areas include:

- Builth and Llanwrtyd (Mid Cluster) is the most sparsely populated with 11 people per km².
- Machynlleth (North Cluster) with a population density of 12 per km² (second lowest)
- Llanfyllin (North Cluster) with 17 people per km² (third lowest).

Total Powys residents, registered with Powys General practices, totals 130,111, noting that GP registered patients is slightly higher at 139,000.

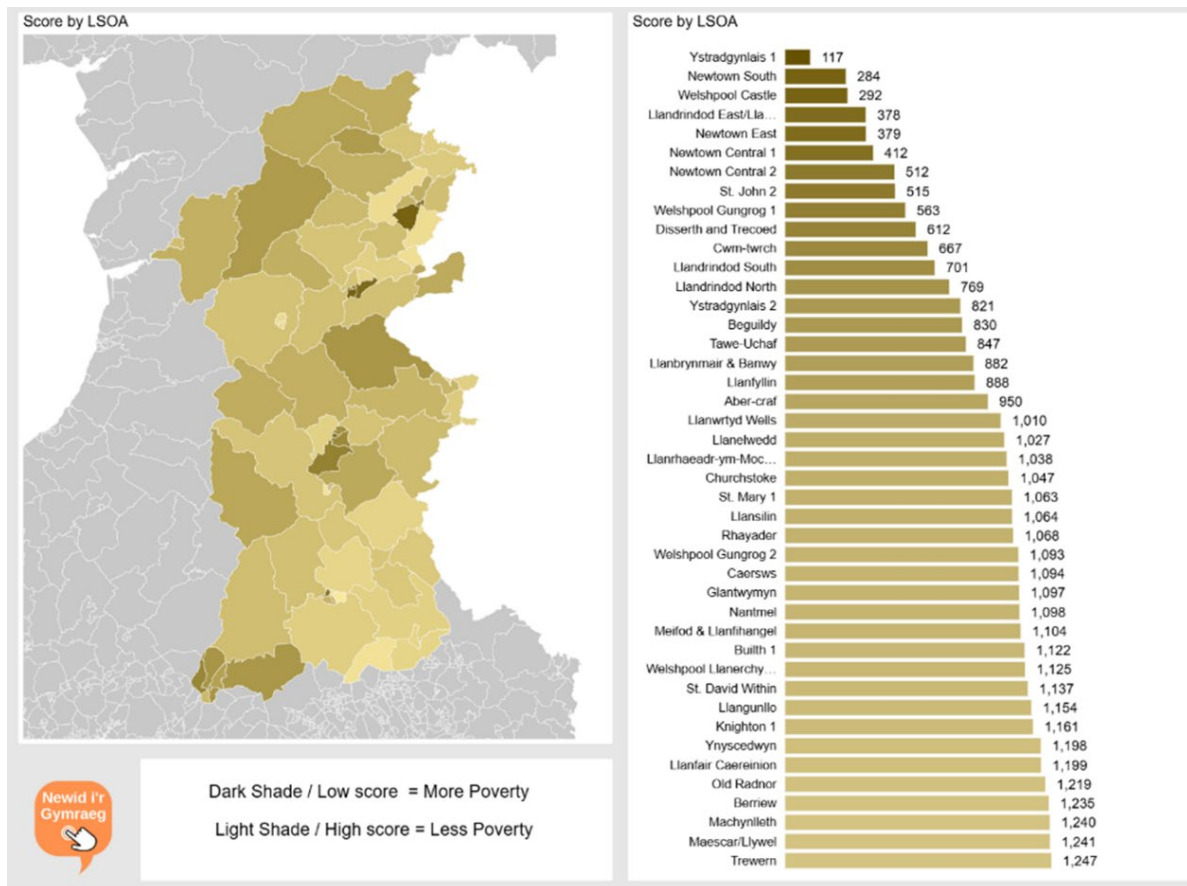
A detailed summary of the population including age profile, is outlined below.

Cluster	Sex	Age					Total by Sex	TOTAL
		0-17	18-64	65-74	75-84	85+		
North	F	5406	17351	4240	3213	1315	31525	63245
	M	5606	18013	4190	3011	894	31714	
	Other/not stated	0	5	0	1	0	6	
Mid	F	2169	7527	2279	1747	649	14371	28799
	M	2414	7722	2192	1613	487	14428	
	Other/not stated	0	0	0	0	0	0	
South	F	3074	10424	2842	2178	859	19377	37967
	M	3263	10217	2620	1894	595	18589	
	Other/not stated	0	0	0	0	1	1	

3.2 Welsh Index Multiple Deprivation (WIMD)

For Powys, the WIMD 2019 data indicates that, while it generally fares better than many other areas in Wales, there are still pockets of deprivation⁵.

Powys' Lower Layer Super Output Areas (LSOAs) are highlighted below in terms of geography and score⁶:



The most deprived areas in Powys relate to access of services, reflecting the rural nature of the county and needs to be considered in the provision and planning of Optometry services. In terms of WIMD category 'access to services', of Powys's 79 LSOAs, 75% (59) are amongst the top 30% most deprived in all of Wales:

- 51% (40) of Powys' LSOAs are in the top 10% most deprived
- 18% (14) LSOAs are in the top 20% most deprived
- 6% (5) LSOAs are in the top 30 % most deprived
- 9 LSOAs rank in the top 30 LSOAs in Wales for most deprived for access to services, with Beguildy ranking as the 2nd most deprived area in the whole of Wales.
- Powys does not contain any LSOAs in the top 10% least deprived for access to services in Wales².

4. WGOS Service Provision

There are currently 15 Optometry practices across PTHB and 4 mobile contractors all offering a mandatory level of service of WGOS 1 and 2 and a range of additional services across WGOS 3-5.

There is an additional mobile contractor providing WGOS 3 mobile services only.

4.1 WGOS 1 and WGOS 2

The Powys WGOS 1 & 2 mandated access offer is detailed below:

Business name	Location	Core Hours Monday - Friday	Core Hours Weekend
Jonathan Partridge Optometrists	Welshpool	09:15 - 13:00 13:50 - 16:40	Test one Sat a month, core hours on that day 9:00 - 12:30
Specsavers Welshpool	Welshpool	09:00 - 17:30	09:00 - 17:00
Mehta Opticians	Welshpool	09:30 - 13:00 14:00 - 16:30	
Mehta Opticians	Newtown	09:30 - 13:00 14:00 - 16:30	
Specsavers Vision Plus	Newtown	09:00 - 17:00	09:00 - 17:00
Probert & Williams Eyecare	Machynlleth	9:30 – 16:00 Weds only, no clinical offer	
S G Marshall Metropia Optics	Builth Wells	09:30 - 13:00 14:00 - 17:00 (Weds 9:30 – 13:0)	
S G Marshall Metropia Optics	Llandrindod Wells	09:30 - 13:00 14:00 - 17:00	
Evans and Jones	Llandrindod Wells	09:00 - 13:00 14:00 - 17:00	
Specsavers Brecon	Brecon	Mon/Tue/Wed/Fri 09:00 - 17:30 Thu 09:00 – 18:30	Sat - 09:00 - 16:30 Sun - Closed
Vision Express	Brecon	09:00 - 17:30	09:00 - 17:00
First Optic	Brecon	09:00 - 17:00	09:00 - 16:00 (Sat)
Jackson & Gill Opticians	Hay on Wye	09:00 - 17:00	09:00 - 16:00 alternate Saturdays
Crickhowell Optometrists	Crickhowell	Mon/Wed/Fri 09:30 - 13:30 (Term time only)	
David R Jenkins Optometrist	Ystradgynlais	09:00 - 12:45 14:00 - 17:00	
Mobile Providers			
Outside Clinic Services	Swindon		Core hours mobile 9:00 - 17:30
Catvog Domiciliary Specsavers Home Visits	Barry	09:00 - 17:00 Tuesday	

Clwyd and Snowdonia Domiciliary	Mold	09:00 - 17:30 mobile only	
Gwent Domiciliary Specsavers	Caerphilly	09:00 - 17:30 mobile only	
Jamo Group athome Healthcare	Newport	09:00 - 17:00 WGOS 3 only	

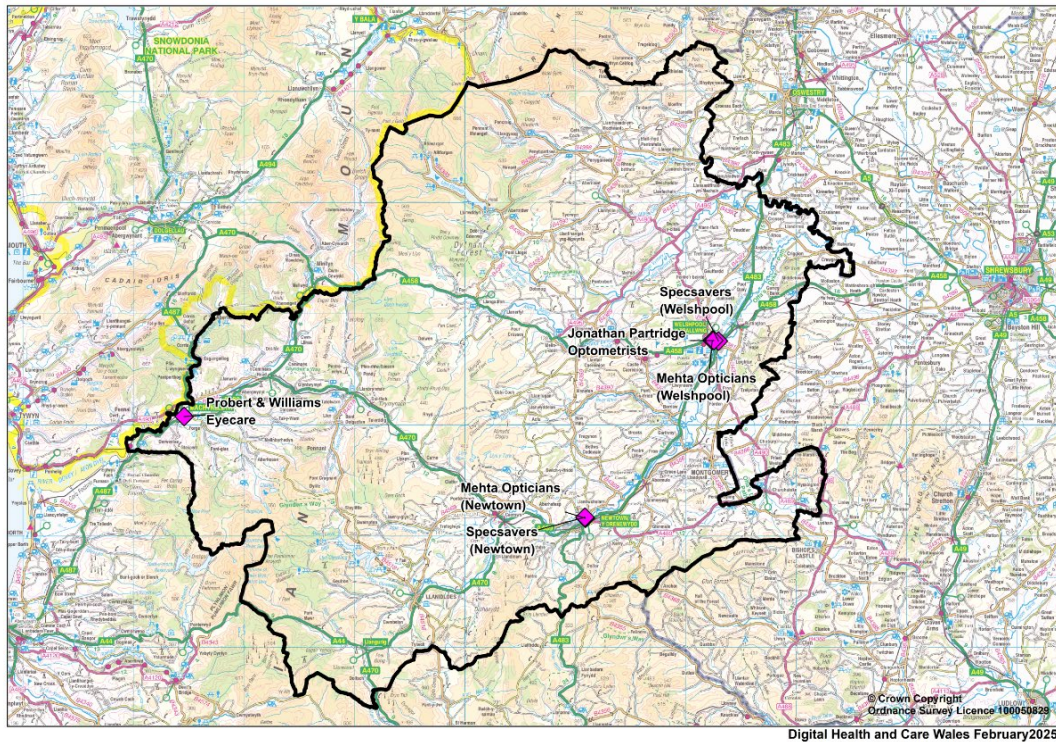
4.2 Location of WGOS providers across PTHB

Patient access to optometry services is not linked to patient registration and therefore patient choice informs where patients choose to access optometry services. Many Powys residents choose to access across border optometry services. This includes both Wales and England services. Following Optometry Contract Reform in Wales patients may not be aware the opportunity WGOS offers compared to English GOS creating inequity of service provision being offered.

The following maps outline the current location of Optometry practices across each of the three Powys Cluster footprints:

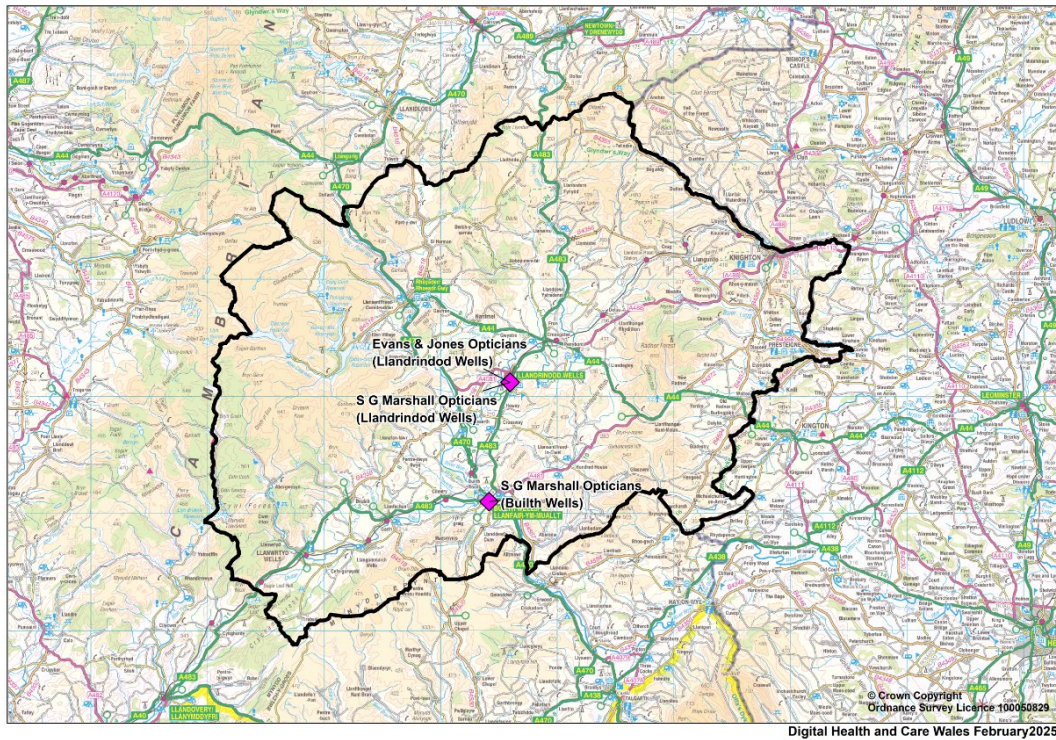
a) North Cluster:

Powys Teaching Health Board - North Cluster Optometrists



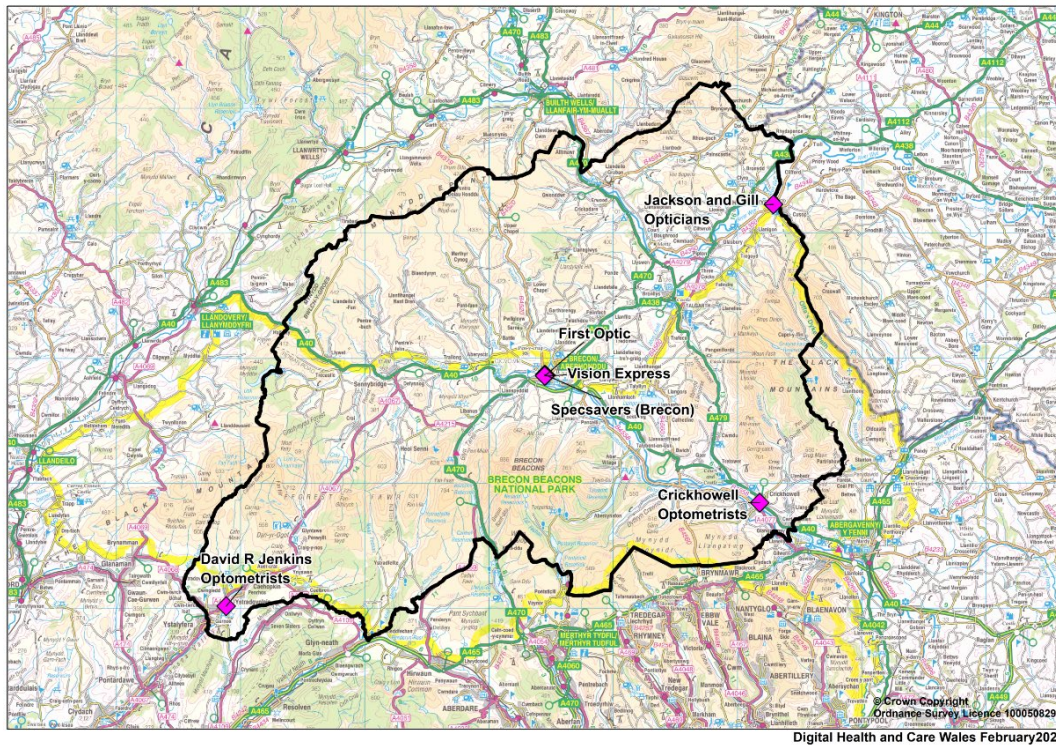
b) *Mid Cluster*

Powys Teaching Health Board - Mid Cluster Optometrists



c) *South Cluster*

Powys Teaching Health Board - South Cluster Optometrists



All 15 practices and the 4 mobile providers are mandated to provide WGOS 1 and WGOS 2 across their core hours. There is a reasonable geographical spread of these services across the Health Board, however noting there are no optometry practices in some of the Powys towns where there is main General Medical Services provision.

There is no optometry service provision in the following Powys towns:

North Cluster	Mid Cluster	South Cluster
<ul style="list-style-type: none"> • Llanfyllin, • Llanfair Caereinion • Montgomery • Llanidloes 	<ul style="list-style-type: none"> • Knighton • Presteigne • Rhayader 	<ul style="list-style-type: none"> • Talgarth

d) North Cluster

One practice in North-West Powys (Machynlleth) declares ‘zero core’ hours which leaves an ongoing service provision gap in this area for both WGOS 1 and 2. The lack of provision for acute appointments under WGOS 2 is more of an issue. Currently, patients face increased travel to access a WGOS 2 service, often this will be out of Powys to either Hywel Dda University Health Board (H DUHB) to the West, or Betsi Cadwaladr University Health Board (BCUHB) to the North.

The table below highlights the increased travel for patients who are not currently able to access services from the registered contractor in Machynlleth:

Destination	Distance from Machynlleth	Travel time from Machynlleth
Aberystwyth	18 miles	35 minutes
Dolgellau	16 miles	25 minutes
Newtown	32 miles	50 minutes

e) Mid Cluster

In addition to the service gap in North-West Powys, there has also been a recent practice closure in the Mid-Cluster. During January 2025, there was a permanent practice closure in Knighton. Whilst the records transferred to the main branch of this business in Llandrindod Wells, it has resulted in reduced access in the Knighton area. Patients now face increased travel to access Optometry services either to Llandrindod Wells or Newtown within Powys, or outside of Wales to Kington, Leominster, or Hereford.

The table below highlights the increased travel for patients who are no longer able to access services from an Optometry practice in Knighton:

Destination	Distance from Knighton	Travel time from Knighton
Newtown	20 miles	35 minutes
Llandrindod Wells	19 miles	30 minutes
Kington	13 miles	22 minutes
Leominster	19 miles	34 minutes

4.3 WGOS 3

There are currently eleven WGOS 3 practices and one mobile provider (providing WGOS 3 only). There is good coverage across all three clusters. However, the limited mobile provision presents challenges across a geographically large, rural Health Board.

4.4 WGOS 4

Implementation of WOS4 services has had a slow start, due to recruitment, capacity and optometrist skill set limitations across the county. This is further compounded by the complexity of the Powys secondary care commissioning arrangements.

- **Glaucoma Filtering:** There are currently two practices offering this service in Mid-Powys (Builth Wells and Llandrindod Wells). As of Q4 2024/25, there is a lack of higher qualified (or in training) workforce to provide a health board-wide WGOS 4 Glaucoma Filtering service. Additionally, there is a lack of available provision in North and South Powys.
- **Glaucoma Monitoring:** As of Q4 2024/25, pathway not yet commenced.
- **Medical Retina:** As of quarter four, 2024/25, pathway not yet commenced.
- **Hydroxychloroquine monitoring:** As of quarter four, 24/25, pathway not yet commenced. However, two practices in North Powys (Welshpool and Newtown) meet the necessary qualification and equipment requirements to provide this service.

4.5 WGOS 5

As of Q4 2024/25, there is WGOS 5 provision in two out of three Clusters. WGOS 5 services are currently provided in North Powys (Welshpool and Newtown) and South Powys (Brecon). There is no provision in Mid-Powys.

4.6 WGOS 1 - 5 service provision summary

PTHB Optometry contractors and full WGOS service provision is summarised below, noting that WGOS 3 -5 are not mandatory services.

Percentage of practices providing WGOS 1-5 across PTHB Clusters									
	WGO S 1	WGO S 2	WGOS 3	WGOS 4 MRF (not live)	WGOS 4 MRM (not live)	WGOS 4 GF	WGOS 4 GM (not live)	WGOS 4 HCQ (not live)	WGOS 5
North Cluster	100%	100%	67%	0%	0%	0%	0%	0%	33%
Mid Cluster	100%	100%	100%	0%	0%	67%	0%	0%	0%
South Cluster	100%	100%	67%	0%	0%	0%	0%	0%	33%
	100%		>50%						<50%

4.6.1 Summary of WGOS activity

The table below summarises WGOS activity (levels 1-5) across quarters 1 to 3, 2024/25, per Cluster including mobile provision.

Activity Q1-3 24/25	North Powys	Mid Powys	South Powys	Mobile	POWYS Total
WGOS1	10506	3652	7674	704	22536
WGOS2 B1	1357	583	1542	2	3484
WGOS2 B2	691	180	301	37	1209
WGOS2 B3	492	185	365	4	1046
WGOS3	48	54	65	9	176
WGOS4	0	0	0	0	0
WGOS5 New	179	0	287	0	466
WGOS5 Follow-up	47	0	122	0	169

5. Third sector support service resources

In Wales, social prescribing involves linking individuals to community resources to enhance their health and well-being. This approach is holistic and person-centred, shifting away from a purely medical model to one that includes cross-sectoral signposting and referrals beyond just healthcare or primary care.

As part of WGOS provision, all Optometrists and Ophthalmic Medical Practitioners (OMPs) are expected to be knowledgeable about local services and to guide or refer patients to suitable resources. Contractors should ensure that all performers are informed about local services and understand how to engage with or refer to them.⁷

Below is a summary of current rehabilitation, third sector and support services within Powys⁸. The list of services and support in the area, is hosted at <https://wcbccd.org.uk/perspectif/powys>

Befriending	Clubs and Social groups	Counselling and emotional support
<ul style="list-style-type: none"> • Friendly phone service (Visual Impairment Breconshire) • Telephone befriending (Sight Cymru) 	<ul style="list-style-type: none"> • Radnorshire Association for the Blind • Visual Impairment Breconshire Social Club • Welshpool and District VI Club 	<ul style="list-style-type: none"> • 111press2 • ASUK Wellbeing Service • Cruse Bereavement Support • C.A.L.L. • Childline • Deafblind UK • Beat • Fight Against Blindness • Royal Society for Blind Children • Young Minds • Local Minds • LOOK mentoring service • Macular Society Counselling Service • Red Cross Support Line • RNIB Counselling • Samaritans
Helplines	Welfare benefits advice	Rehabilitation
<ul style="list-style-type: none"> • Age Cymru • Behcet's UK • Citizens Advice • Contact • Deafblind UK • The Dystonia Society • Equality Advisory Support Service • Esme's Umbrella 	<ul style="list-style-type: none"> • Advicelink Cymru • Age Cymru • Contact • Blind Veterans • Macular Society • On-line Benefits adviser (UK Government) • Turn2us • Citizens Advice 	<p>Powys Vision Rehabilitation Specialist (VRS)</p>

<ul style="list-style-type: none"> • Glaucoma UK • MACS (Microphthalmia, Anophthalmia & Coloboma Support) • Macular Society • Nystagmus Network • Retina UK • RNIB • British Sjogren's Syndrome Association • SNAP Cymru 		
Support groups	ECLO	
<ul style="list-style-type: none"> • Macular Group - Brecon • Macular Group – Newtown • Macular Group - Welshpool • Macular Group - Ystradgynlais 	<ul style="list-style-type: none"> • Full time ECLO service operates from a range of community clinics including Ystradgynlais, Brecon, Llandrindod Wells, Llanidloes, Machynlleth, and Welshpool. 	

6. Increasing demand for eye care services

The proportion of people aged 75 years and over in the Powys Teaching Health Board is higher than the average for Wales. 13% of the population are aged 75 plus, compared to 10% in Wales.

Sight loss is linked to advancing age, the RNIB⁹ projects that by 2032 there are expected to be 7,210 people in the Powys Teaching Health Board living with sight loss, an estimated increase of 18% over the next decade.

The table below summarises PTHB'S estimated prevalence of sight loss over time (2022-2032), by severity⁹:

Severity of sight loss	2022	2032
Mild sight loss	3,910	4,620
Moderate sight loss	1,350	1,580
Severe sight loss	840	1,010
Total	6,100	7,210

The RNIB (2023) Sight Loss Data Tool⁹ estimates the prevalence of a number of ocular conditions for PTHB. This data has been used to inform the Powys future eye healthcare needs.

6.1 Age-Related Macular Degeneration (AMD)

Across PTHB, the RNIB estimate:

- 8,310 (6.2 %) people are living with the early stages of AMD;
- 640 (0.48%) are living with late-stage dry AMD;
- 1,320 (0.99%) are living with late-stage wet AMD.
- 1,860 (1.39%) combined late-stage AMD
- Between 2022 and 2032 the RNIB estimates an increase of 22% (409) in the number of people living with late-stage AMD

6.2 Cataract

The RNIB estimate that, across PTHB:

- 2,080 (1.56%) people living with cataract.
- Between 2022 and 2032 there is estimated to be an increase of 22% (458) in the number of people living with cataract.

6.3 Glaucoma

Across PTHB, the RNIB estimate:

- 3,030 (2.278%) people are living with ocular hypertension.
- A further 1,940 (1.45%) people are living with glaucoma.
- Between 2022 and 2032 there is estimated to be an increase of 14% (272) in the number of people living with glaucoma.

6.4 Diabetic Retinopathy

Across PTHB, RNIB estimate

- 2,700 (2.03%) people are living with diabetic retinopathy.
- Of these, it is estimated that 250 (0.18%) have severe diabetic retinopathy likely to result in significant and potentially certifiable sight loss.
- Between 2022 and 2032 there is estimated to be an increase of 2% (54) in the number of people living with diabetic retinopathy.

6.5 Related disease prevalence and factors that affect eye conditions

Diabetes provides a significant risk to eye health, as it can lead to an increased risk of glaucoma, diabetic retinopathy and cataracts. Current Powys prevalence is 8%¹⁰.

In addition to chronic conditions, key risk factors such as obesity increases the risk of developing diabetes, leading to an increased risk of a range of eye related health conditions, as detailed above.

The percentage of people self-reported by lifestyle criteria and Local Authority for obesity is as follows¹¹:

Criteria	BMI
Powys residents with BMI 25 – under 30 (overweight but not obese)	32.04%
Powys residents with BMI 25 (overweight or obese)	49.99%
Powys residents with a BMI 30 (obese)	17.95%

Smoking is known to increase the risk of developing age-related macular degeneration (AMD) and cataracts. 10.73% of Powys residents self-reported a smoker lifestyle¹¹.

Certain ethnic groups are more at risk of having sight loss, in particular Black, Asian or Minority Ethnic are at an increased risk of glaucoma and diabetic retinopathy. The Powys population with these ethnic groups is lower than all Wales average as detailed below¹².

Ethnic group of usual residents: Powys - Wales - Wales (2021)		
Classification	Powys %	Wales %
Asian, Asian British or Asian Welsh	0.9	2.9
Black, Black British, Black Welsh, Caribbean or African	0.2	0.9
Mixed or Multiple ethnic groups	0.9	1.6
White	97.7	93.8
Other ethnic groups	0.3	0.9

7. Current secondary care eyecare pathways

PTHB has one of the most complex healthcare flows in the UK, which includes Powys based in-reach services, and patients travelling to more than fifteen other NHS organisations, spanning five health economies across England and Wales.

A review of the January 2025 Ophthalmology R1 (patients considered at risk of irreversible harm or significant adverse outcomes if their target appointment date is missed) outpatient waiting list for Glaucoma and Retina reveals patients suitable to receive WGOS 4 services across all three Cluster areas.

Due to current optometry skill set, the implementation of pathways in primary care optometry is limited, therefore secondary care pathways will continue to be place until adequate primary care optometry provision can be implemented.

The first phase of WGOS4 service transformation to optometry is initially focusing on Powys Provider activity only.

Powys Provider Ophthalmology is commissioned from Wye Valley NHS Trust (main provider), Hywel Dda UHB, Shrewsbury & Telford NHS Trust, Swansea Bay UHB on an in-reach basis, supported by a PTHB eyecare multi-disciplinary team.

The Powys eyecare multi-disciplinary team supports the delivery of routine Ophthalmology services from six community hospitals: Ystradgynlais, Brecon, Llandrindod Wells, Welshpool, Llanidloes, and Machynlleth. In addition, WeT AMD and daycase services are currently provided in theatres in Brecon and Llandrindod Wells Community Hospitals.

Powys provider @ Sept 2024	Follow-up	New patients	Total
Diabetic Retinopathy	85	21	106
Medical Retina	145	60	205
Glaucoma	968	136	1104

The Hydroxychloroquine provider service in Powys is due to commence in quarter 1 2025/26. There have been significant delays due to equipment supplier/digital health challenges. Currently, Hydroxychloroquine activity was delivered in neighbouring NHS Wales and NHS England Providers for Powys residents.

At the time of writing this Eye Health Needs Assessment, detailed referral data to PTHB Commissioned services is not readily available, however below is the 2023/24 Outpatient Activity by Commissioned Provider for all Outpatient Ophthalmology pathways, which is referenced for proxy purposes. Further work is ongoing to understand the detail sitting behind these numbers to support the 'shift left of services' and the additional eye health resource, for revised pathways to be implemented within optometry WGOS 4 services.

Provider	OP Activity All Ophthalmology Pathways
Shrewsbury & Telford NHS Trust	5994
Wye Valley NHS Trust	5916
Swansea Bay University Health Board	1902
Hywel Dda University Health Board	1518
Aneurin Bevan University Health Board	557
Betsi Cadwalader University Health Board	442
Cwm Taf Morgannwg University Health Board	261
Cardiff & Vale University Health Board	113
2023/24 All Providers	16703

8. DDA compliance

Data not available at time of publishing.

9. Welsh Language

On 30 May 2019, the Welsh Language Standards were introduced for all Primary Care

Contractors, by Welsh Government.

These Duties require the following from Contractors:

1. Notify the Local Health Board if services are provided through the medium of Welsh.
2. Provide Welsh language versions of all documents or forms provided by the local health board.
3. Ensure that any new sign or notice provided is bilingual.
4. Encourage staff to wear a badge or lanyard to show that they are able to speak Welsh or are learning Welsh.
5. Establish and record the language preference of a patient.
6. Encourage and assist staff to utilise information and/or attend training courses or events provided by the local health board.

Across Powys, there is an increasing thriving Welsh culture ⁴. Data from the 2021 Census¹³ revealed that:

- 75% of residents in Powys had 'No Welsh Skills'
- 13% could 'Speak, Read and Write Welsh'
- 13 % had other combinations of Welsh language skills, including 'Speaking and Reading Welsh' and 'Speaking and Understanding Spoken Welsh'

The top three localities with the highest percentage of Welsh speakers are¹³:

- Machynlleth locality (North Cluster)
- Ystradgynlais locality (South Cluster)
- Llanfyllin locality (North Cluster)

There are Welsh speakers within every locality in Powys and that the language is used in communities across the Health Board.

In line with the Welsh language duties for independent primary care providers ¹⁴, the 2025 Quality for Optometry submissions collected Welsh Language provision data. Across PTHB, only two (10.5%) Contractors reported the ability to provide Optometry services via the medium of Welsh. This provision can be found within one fixed premises provider in Welshpool (North Cluster) and one pan-Health Board mobile provider. All contractors can, however, access the Wales Translation and Interpretation Service (WITS).

10. Workforce

10.1 Ophthalmic Performers List

The PTHB currently has 39 registered professionals.

Optometrists	Student Optometrists	Dispensing Opticians
32	4	3

Of these 39 professionals, 35 are known to be associated with a named Contractor. This can be summarised as:

- North Cluster: 17 professionals
- Mid Cluster: 6 professionals
- South Cluster: 11 professionals
- Mobile: 1
- Unspecified: 4

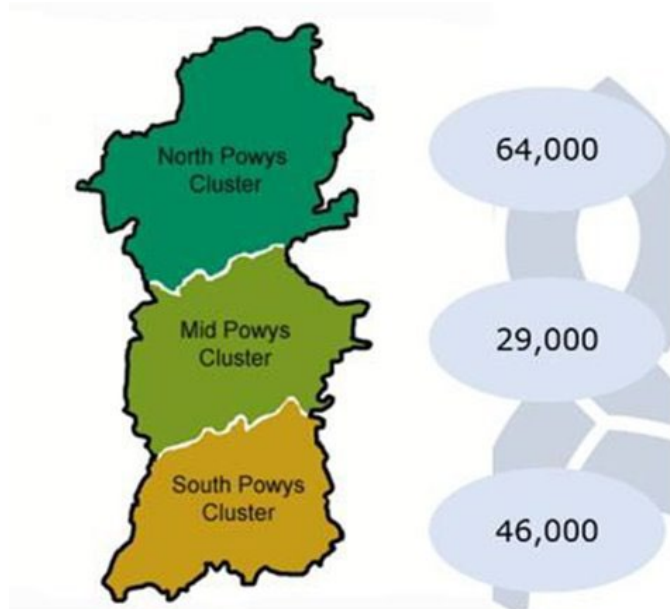
10.2 Higher qualified workforce

The local higher qualified workforce aligned with WGOS 3-5 is summarised below:

Higher Qualified workforce					
	Higher Certificate Glaucoma	Professional Certificate Glaucoma	Professional Certificate Medical Retina	Independent Prescribers	Low Vision
North Cluster					
Welshpool	0	2	3	2	2
Newtown	0	1	2	1	1
Machynlleth	0	0	0	0	1
Mid Cluster					
Llandrindod Wells	1	1	1	0	2
Builth Wells	1	1	1	0	1
South Cluster					
Hay-on-Wye	0	0	0	0	0
Crickhowell	0	1	1	0	1
Brecon	0	1	1	2	2
Ystradgynlais	0	1	0	0	1

11. Powys Clusters

Powys is divided into three Clusters: North Powys, Mid Powys, and South Powys, each shaped by the county's natural geography and community footprints.



These Clusters work alongside the Health Board to create plans aimed at enhancing the health and wellbeing of the local population. Their goal is to design services that meet specific community needs, improve access by offering more local services, and reduce the demand for acute care.

The Clusters bring together various community and service representatives to develop plans that focus on:

- Enhancing local population health and wellbeing
- Improving the quality-of-care services (ensuring they are timely, safe, effective, individualized, and dignified)
- Increasing the efficiency of care service delivery⁴.

The Powys Clusters collaborate on planning and delivering care, creating opportunities to advance a sustainable care model as part of the Area Plan. They align their efforts with ministerial priorities, the area plan, and the health board plan, considering local population needs. For 2025/26, the Powys Clusters have set priorities and actions in five key areas:

- Improving Access to Primary & Community Services
- Pathways of Care, essential services, and business continuity
- Urgent & Emergency Care
- Mental Health and Wellbeing
- Workforce & Wellbeing

11.1 North Cluster

The North Powys Cluster is made up of seven GP Practices, located in the following towns:

- Llanfyllin, with branch surgeries in Llanrheadr Y Mochnant and Four Crosses
- Welshpool, with a branch surgery in Guilsfield
- Llanfair Caereinion
- Montgomery, with a branch surgery in Newtown
- Newtown
- Machynlleth
- Llanidloes, with a branch surgery in Caersws

All north cluster practices are dispensing practices, providing health services to a rural population of approximately 64,000 patients.

Ten NHS dental practices located in the following towns:

- Llanfair Caereinion
- Llansantffraid
- Llanidloes
- Machynlleth
- Newtown
- Welshpool

Eight Community Pharmacies located in the following towns:

- Newtown
- Welshpool
- Llanfyllin
- Llanidloes
- Machynlleth

Six Optometry practices located in the following towns:

- Welshpool
- Newtown
- Machynlleth

There are four community hospitals, located in Machynlleth, Newtown, Llanidloes and Welshpool, providing a range of differing services across the four sites such as Outpatients facilities, Minor Injury Unit, X-ray Facilities, Therapy services, Midwife led Birth Centre, Inpatient general medical ward, Dialysis, specialist Stroke services,

rehabilitation and palliative care services. Secondary care Ophthalmology services are provided from Machynlleth, Llanidloes and Welshpool.

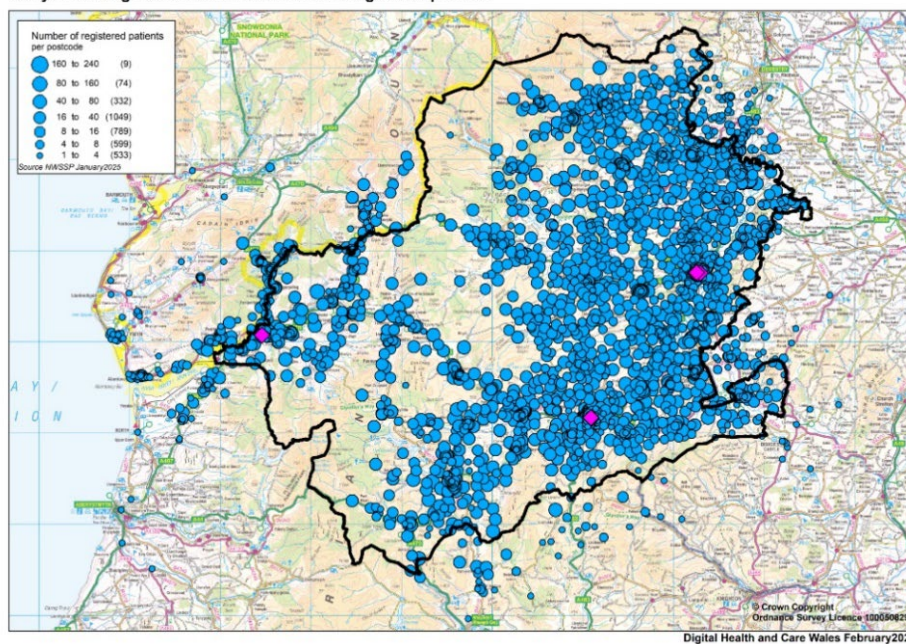
There is also a Children’s Centre, providing a range of Community clinics for children and young people, and dedicated Mental Health facility, located in Newtown, providing a range of community mental health services.

There are a range of Third sector services provided across the North Powys Cluster, including mental health, home support and befriending services.

Powys Association of Voluntary Organisations working in partnership with Powys County Council and Powys Teaching Health Board, provide a Community Connectors Service, a Cancer Community Connector, and Health and Wellbeing engagement service, and a Mental Health Information service.

The below map highlights the North-Cluster GP registered patients and the location of Optometry Practices:

Powys Teaching Health Board - North Cluster registered patients



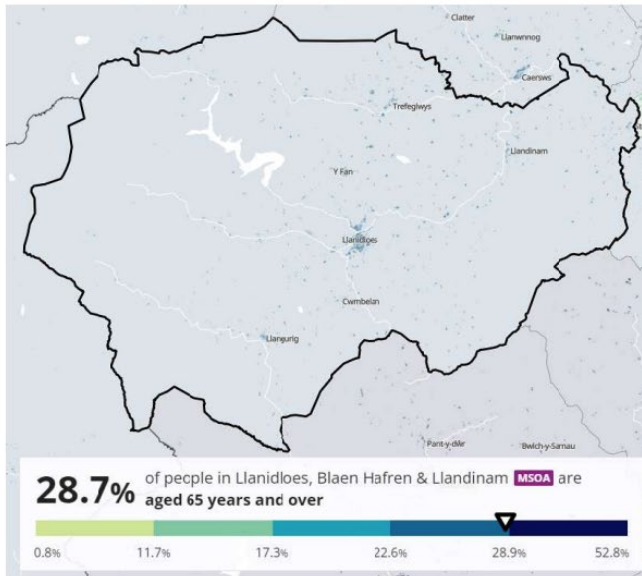
Jonathan Partridge Optometrists	Welshpool
Specsavers Welshpool	Welshpool
Mehta Opticians	Welshpool
Mehta Opticians	Newtown
Specsavers Vision Plus	Newtown
Probert & Williams Eyecare	Machynlleth

11.1.1 Key demographic features of the North-Cluster include:

Llanidloes, Blaen Hafren and Llandinam MSOA

- This MSOA has none of its 4 LSOAs within the most deprived 20% of all Welsh LSOAs
- 34.8% of households are one-person households
- 13.4% of the population are 75 years and over
- 28.7% are aged 65 years and over

Llanidloes, Blaen Hafren & Llandinam MSOA



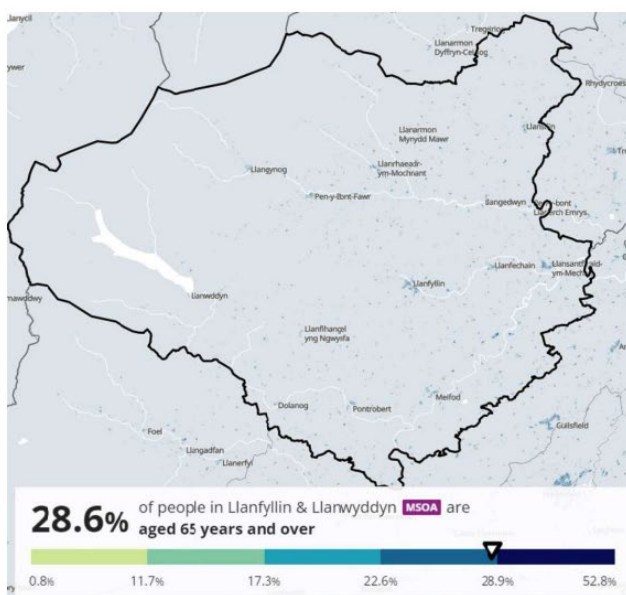
Age groups	Proportion of population
Aged 15 years & younger	15.4%
Aged 16 – 64 years	55.9%
Aged 75 years & over	13.4%
Ethnic group	Proportion of population
White	98.4%
Other Ethnic Populations	1.6%
Deprivation	
34.8% of households deprived in one dimension	
13.3% of households deprived in two dimensions	
2.3% of households deprived in three dimensions	
0.1% of households deprived in four dimensions	
34.8% of households are one-person households	

This MSOA has none of its 4 LSOAs within the most deprived 20% of all Welsh LSOAs.

Llanfyllin and Llanwyddyn MSOA

- This MSOA has none of its 5 LSOAs within the most deprived 20% of all Welsh LSOAs
- 29.5% of households are one-person households
- 13.4% of the population are 75 years and over
- 28.6% are aged 65 years and over

Llanfyllin & Llanwyddyn MSOA



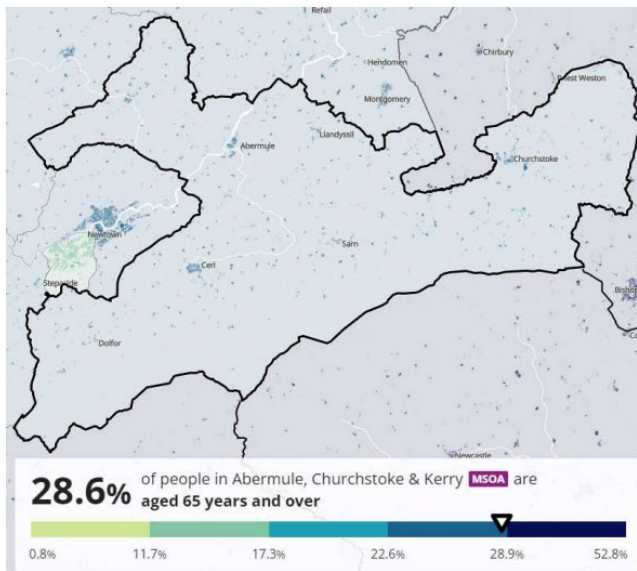
Age groups	Proportion of population
Aged 15 years & younger	15.4%
Aged 16 – 64 years	56.1%
Aged 75 years & over	13.4%
Ethnic group	Proportion of population
White	99.2%
Other Ethnic Populations	0.8%
Deprivation	
35.2% of households deprived in one dimension	
12.1% of households deprived in two dimensions	
2.0% of households deprived in three dimensions	
0.1% of households deprived in four dimensions	
29.5% of households are one-person households	

This MSOA has none of its 5 LSOAs within the most deprived 20% of all Welsh LSOAs.

Abermule, Churchstoke & Kerry MSOA

- This MSOA has none of its 3 LSOAs within the most deprived 20% of all Welsh LSOAs
- 26.23 of households are one-person households
- 13.1% of the population are 75 years and over
- 28.6% are aged 65 years and over

Abermule, Churchstoke & Kerry MSOA



Age groups	Proportion of population
Aged 15 years & younger	14.9%
Aged 16 – 64 years	56.5%
Aged 75 years & over	13.1%

Ethnic group	Proportion of population
White	98.9%
Other Ethnic Populations	1.1%

Deprivation
34.7% of households deprived in one dimension
11.9% of households deprived in two dimensions
1.4% of households deprived in three dimensions
0% of households deprived in four dimensions

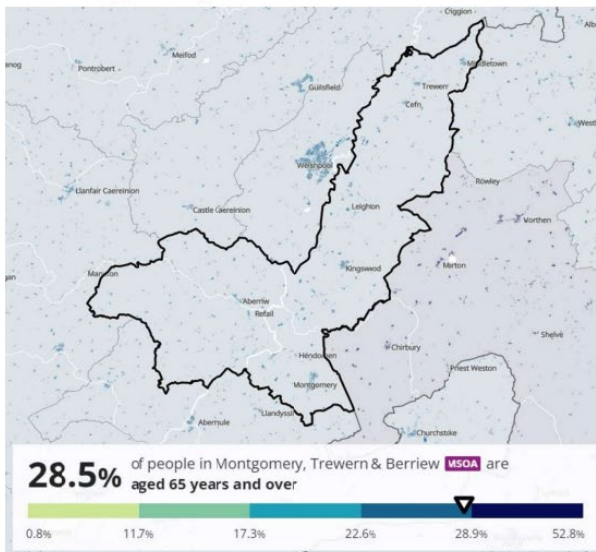
26.3% of households are one-person households

This MSOA has none of its 3 LSOAs within the most deprived 20% of all Welsh LSOAs.

Montgomery, Trewern & Berriew MSOA

- This MSOA has none of its 4 LSOAs within the most deprived 20% of all Welsh LSOAs
- 29.5% of households are one-person households
- 14.0% of the population are 75 years and over
- 28.5% are aged 65 years and over

Montgomery, Trewern & Berriew MSOA



Age groups	Proportion of population
Aged 15 years & younger	14.9%
Aged 16 – 64 years	56.6%
Aged 75 years & over	14.0%

Ethnic group	Proportion of population
White	99.1%
Other Ethnic Populations	0.9%

Deprivation
34.8% of households deprived in one dimension
11.3% of households deprived in two dimensions
1.7% of households deprived in three dimensions
0% of households deprived in four dimensions

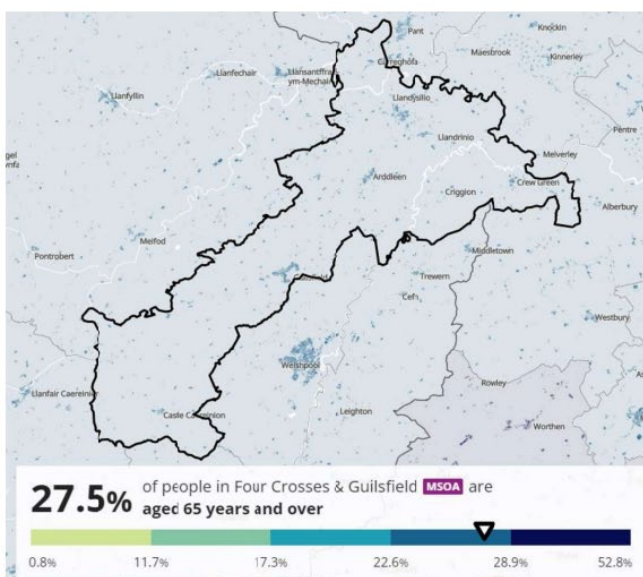
29.5% of households are one-person households

This MSOA has none of its 4 LSOAs within the most deprived 20% of all Welsh LSOAs.

Four Cross and Guilsfield MSOA

- This MSOA has none of its 3 LSOAs within the most deprived 20% of all Welsh LSOAs
- 27.8% of households are one-person households
- 12.9% of the population are 75 years and over
- 27.5% are aged 65 years and over

Four Crosses & Guilsfield MSOA



Age groups	Proportion of population
Aged 15 years & younger	15.1%
Aged 16 – 64 years	57.4%
Aged 75 years & over	12.9%

Ethnic group	Proportion of population
White	98.1%
Other Ethnic Populations	1.9%

Deprivation
32.6% of households deprived in one dimension
11.8% of households deprived in two dimensions
1.8% of households deprived in three dimensions
0% of households deprived in four dimensions

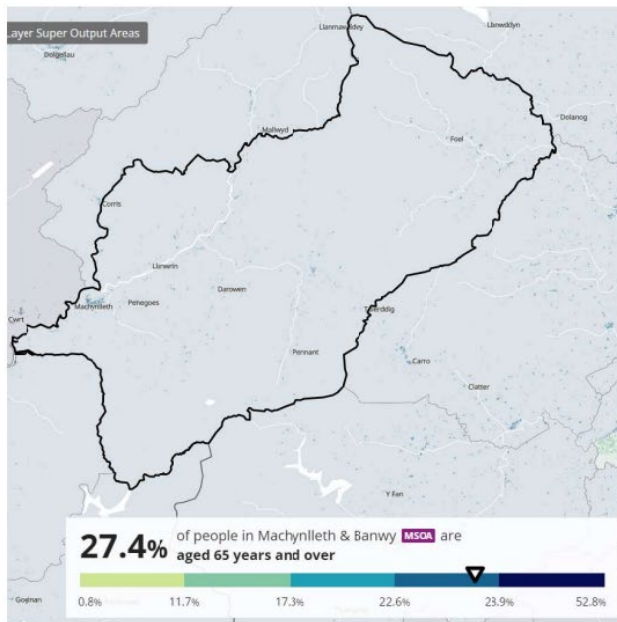
27.8% of households are one-person households

This MSOA has none of its 3 LSOAs within the most deprived 20% of all Welsh LSOAs.

Machynlleth and Banwy MSOA

- This MSOA has none of its 3 LSOAs within the most deprived 20% of all Welsh LSOAs
- 35.5% of households are one-person households
- 11.8% of the population are 75 years and over
- 27.4% are aged 65 years and over

Machynlleth & Banwy MSOA



Age groups	Proportion of population
Aged 15 years & younger	15.1%
Aged 16 – 64 years	57.5%
Aged 75 years & over	11.8%

Ethnic group	Proportion of population
White	98.2%
Other Ethnic Populations	1.8%

Deprivation
35.1% of households deprived in one dimension
14.4% of households deprived in two dimensions
2.7% of households deprived in three dimensions
0.1% of households deprived in four dimensions

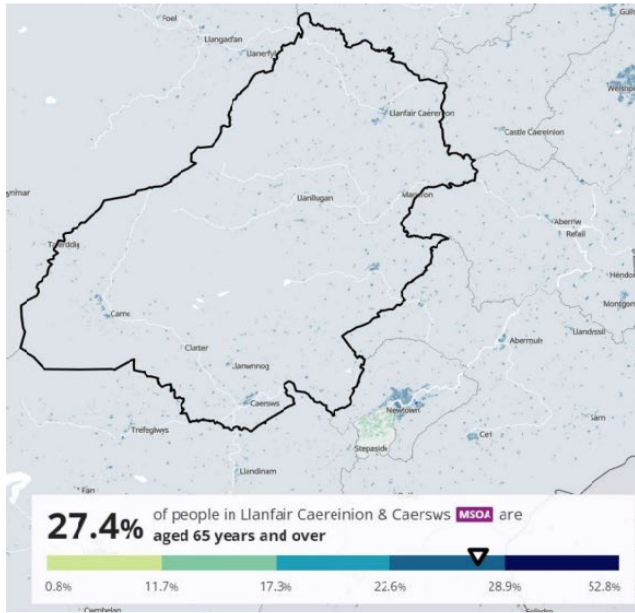
32.5% of households are one-person households

This MSOA has none of its 3 LSOAs within the most deprived 20% of all Welsh LSOAs.

Llanfair Caereinion and Caersws MSOA

- This MSOA has none of its 3 LSOAs within the most deprived 20% of all Welsh LSOAs
- 28.4% of households are one-person households
- 11.8% of the population are 75 years and over
- 27.4% are aged 65 years and over

Llanfair Caereinion & Caersws MSOA



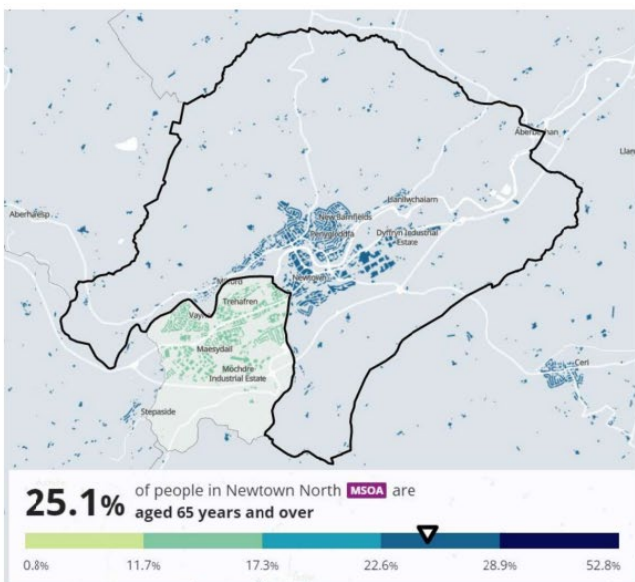
Age groups	Proportion of population
Aged 15 years & younger	15.5%
Aged 16 – 64 years	57.1%
Aged 75 years & over	11.8%
Ethnic group	Proportion of population
White	98.7%
Other Ethnic Populations	1.3%
Deprivation	
34.2% of households deprived in one dimension	
12.9% of households deprived in two dimensions	
2.6% of households deprived in three dimensions	
0.1% of households deprived in four dimensions	

28.4% of households are one-person households
 This MSOA has none of its 3 LSOAs within the most deprived 20% of all Welsh LSOAs.

Newtown North MSOA

- This MSOA has 1 of its 3 LSOAs within the most deprived 20% of all Welsh LSOAs
- 40.7% of households are one-person households
- 12.2% of the population are 75 years and over
- 25.1% are aged 65 years and over

Newtown North MSOA



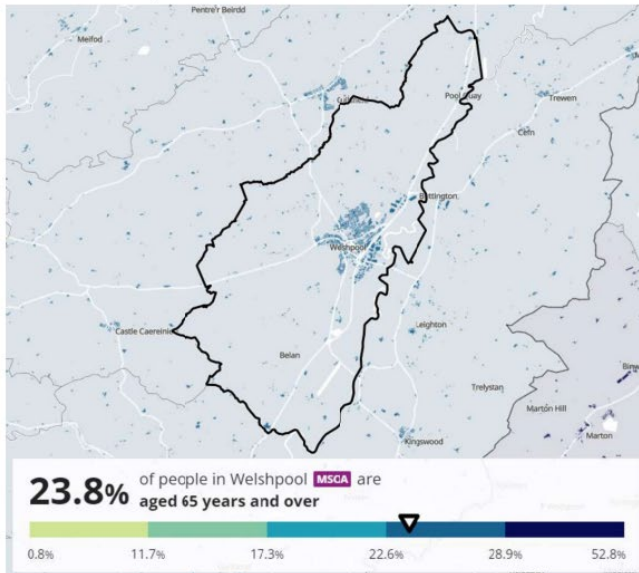
Age groups	Proportion of population
Aged 15 years & younger	15.8%
Aged 16 – 64 years	59.0%
Aged 75 years & over	12.2%
Ethnic group	Proportion of population
White	96.3%
Other Ethnic Populations	3.7%
Deprivation	
33.8% of households deprived in one dimension	
15.9% of households deprived in two dimensions	
3.7% of households deprived in three dimensions	
0.1% of households deprived in four dimensions	

40.7% of households are one-person households
 This MSOA has 1 of its 3 LSOAs within the most deprived 20% of all Welsh LSOAs.

Welshpool MSOA

- This MSOA has 1 of its 4 LSOAs within the most deprived 20% of all Welsh LSOAs
- 32.6% of households are one-person households
- 11.6% of the population are 75 years and over
- 23.8% are aged 65 years and over

Welshpool MSOA



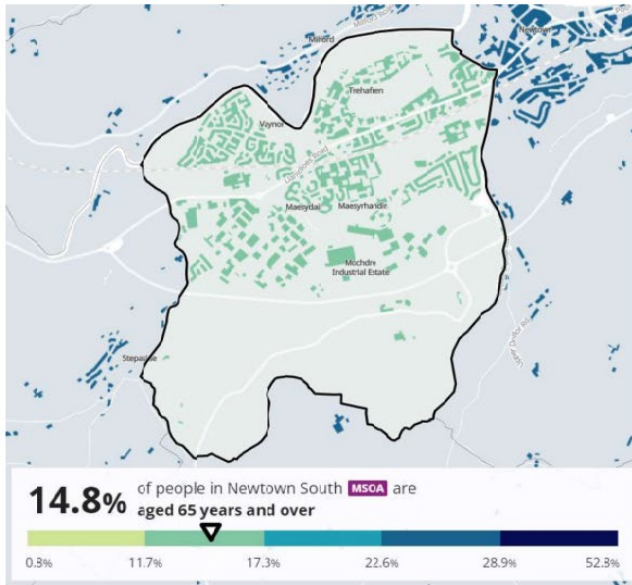
Age groups	Proportion of population
Aged 15 years & younger	16.6%
Aged 16 – 64 years	59.6%
Aged 75 years & over	11.6%
Ethnic group	Proportion of population
White	97.6%
Other Ethnic Populations	2.4%
Deprivation	
35.8% of households deprived in one dimension	
17.7% of households deprived in two dimensions	
5% of households deprived in three dimensions	
0.2% of households deprived in four dimensions	

32.6% of households are one-person households
 This MSOA has 1 of its 4 LSOAs within the most deprived 20% of all Welsh LSOAs.

Newtown South MSOA

- This MSOA has 1 of its 3 LSOAs within the most deprived 20% of all Welsh LSOAs
- 32.4% of households are one-person households
- 6.8% of the population are 75 years and over
- 14.8% are aged 65 years and over

Newtown South MSOA



Age groups	Proportion of population
Aged 15 years & younger	23.1%
Aged 16 – 64 years	62.0%
Aged 75 years & over	6.8%
Ethnic group	Proportion of population
White	97.7%
Other Ethnic Populations	2.3%
Deprivation	
34.2% of households deprived in one dimension	
21.0% of households deprived in two dimensions	
5.1% of households deprived in three dimensions	
0.2% of households deprived in four dimensions	

32.4% of households are one-person households

This MSOA has 1 of its 3 LSOAs within the most deprived 20% of all Welsh LSOAs.

11.2 Mid Cluster

The Mid Powys Cluster is made up of five GP Practices, providing services to a rural population of approximately 29,000 patients. The practices are located at

- Builth Wells
- Llandrindod Wells
- Presteigne
- Knighton Rhayader

Six dental practices located in the following towns:-

- Builth Wells
- Llandrindod Wells
- Rhayader
- Knighton

Seven Community Pharmacies located in the following towns:-

- Builth Wells
- Knighton
- Llandrindod Wells
- Llanwrtyd Wells
- Presteigne
- Rhayader

Three Optometry practices located in the following towns

- Builth Wells
- Llandrindod Wells

There is a community hospital, located in Llandrindod Wells providing a range of differing services including Outpatients services, Minor Injury Unit, X-ray Facilities, Therapy services, Minor Surgery and Endoscopy, Mid-wife led Birth Centre, inpatient general medical ward, Dialysis, Midwife-led birth centre, Inpatient General / Medical Ward, and elderly Mental Health Ward. The community hospital in Llandrindod Wells provides secondary care Ophthalmology services.

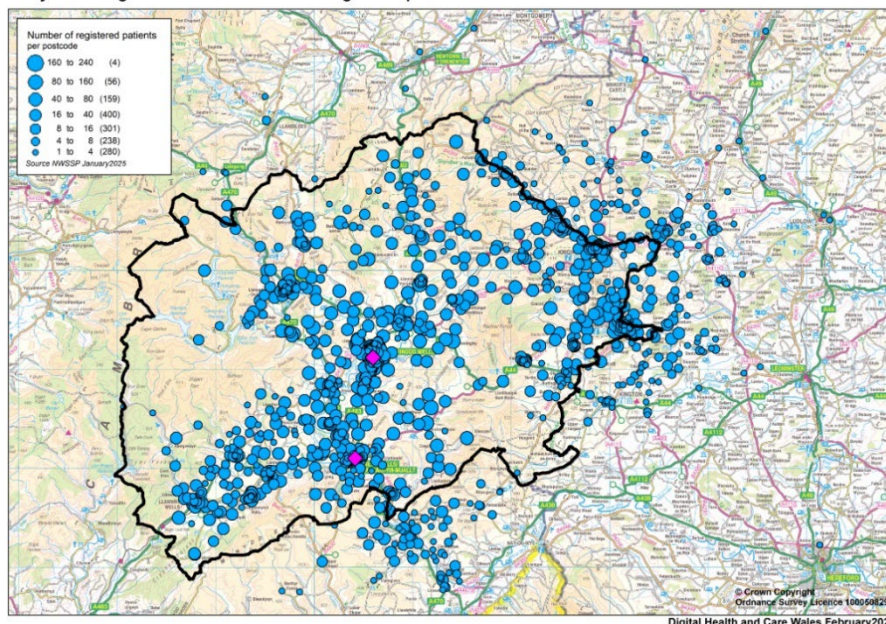
There is also a Community Mental Health facility, located in Llandrindod Wells, and an Integrated Health and Care Centre, providing short stay reablement services.

There are a range of Third Sector services provided across the Mid Powys Cluster, including mental health, home support and befriending services.

Powys Association of Voluntary Organisations working in partnership with Powys County Council and Powys Teaching Health Board, provide a Community Connectors Service, a Cancer Community Connector, and Health and Wellbeing engagement service, and a Mental Health Information service.

The below map highlights the Mid-Cluster GP registered patients and the location of Optometry Practices:

Powys Teaching Health Board - Mid Cluster registered patients

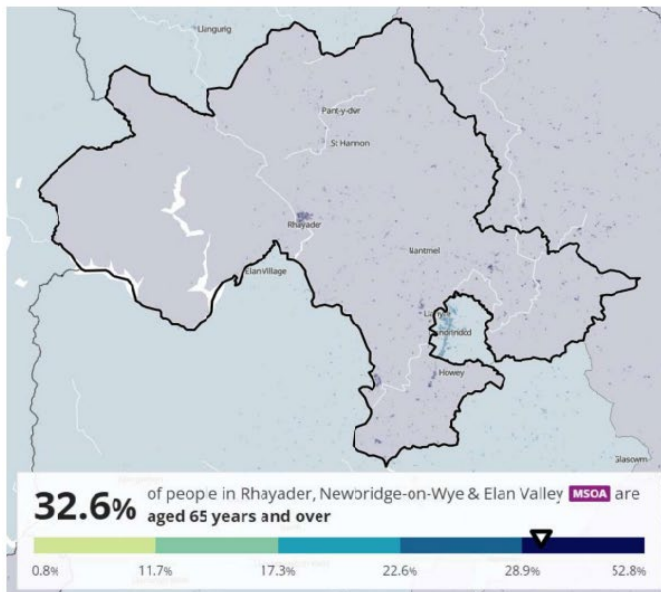


Evans & Jones	Llandrindod Wells
SG Marshall	Llandrindod Wells
SG Marshall	Builth Wells

Rhayader, Newbridge on Wye and Elan Valley MSOA

- This MSOA has none of its 5 LSOAs within the most deprived 20% of all Welsh LSOAs
- 32.2% of households are one-person households
- 15.6% of the population are 75 years and over
- 32.6% are aged 65 years and over

Rhayader, Newbridge-on-Wye & Elan Valley MSOA



Age groups	Proportion of population
Aged 15 years & younger	14.8%
Aged 16 – 64 years	52.6%
Aged 75 years & over	15.6%
Ethnic group	Proportion of population
White	98.3%
Other Ethnic Populations	1.7%
Deprivation	
35.8% of households deprived in one dimension	
13.8% of households deprived in two dimensions	
2.6% of households deprived in three dimensions	
0.1% of households deprived in four dimensions	

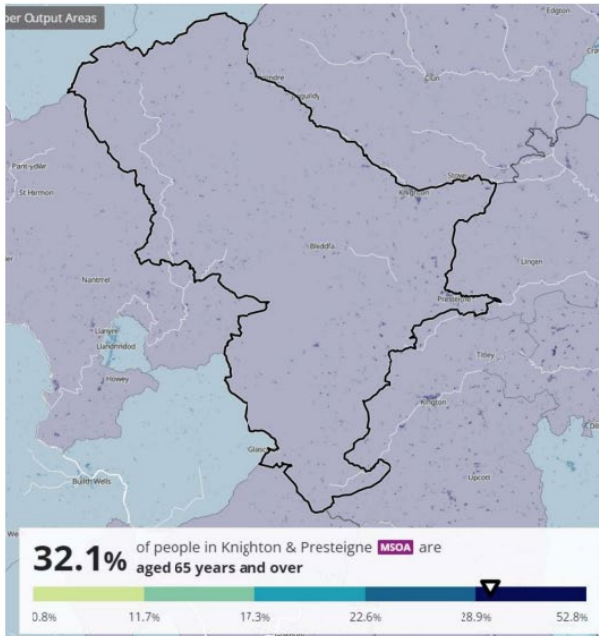
32.2% of households are one-person households

This MSOA has none of its 5 LSOAs within the most deprived 20% of all Welsh LSOAs.

Knighton and Presteigne MSOA

- This MSOA has none of its 7 LSOAs within the most deprived 20% of all Welsh LSOAs
- 32.1% of households are one-person households
- 14.7% of the population are 75 years and over
- 32.1% are aged 65 years and over

Knighton & Presteigne MSOA



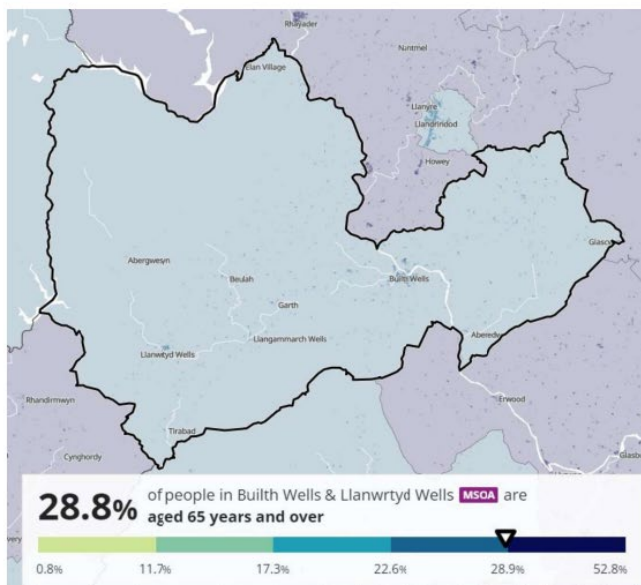
Age groups	Proportion of population
Aged 15 years & younger	13.7%
Aged 16 – 64 years	54.1%
Aged 75 years & over	14.7%
Ethnic group	Proportion of population
White	98.6%
Other Ethnic Populations	1.4%
Deprivation	
36.1% of households deprived in one dimension	
13.3% of households deprived in two dimensions	
2.0% of households deprived in three dimensions	
0.1% of households deprived in four dimensions	

32.1% of households are one-person households
 This MSOA has none of its 7 LSOAs within the most deprived 20% of all Welsh LSOAs.

Builth Wells and Llanwrtyd Wells MSOA

- This MSOA has none of its 5 LSOAs within the most deprived 20% of all Welsh LSOAs
- 33.2% of households are one-person households
- 12.4% of the population are 75 years and over
- 28.8% are aged 65 years and over

Builth Wells & Llanwrtyd Wells MSOA



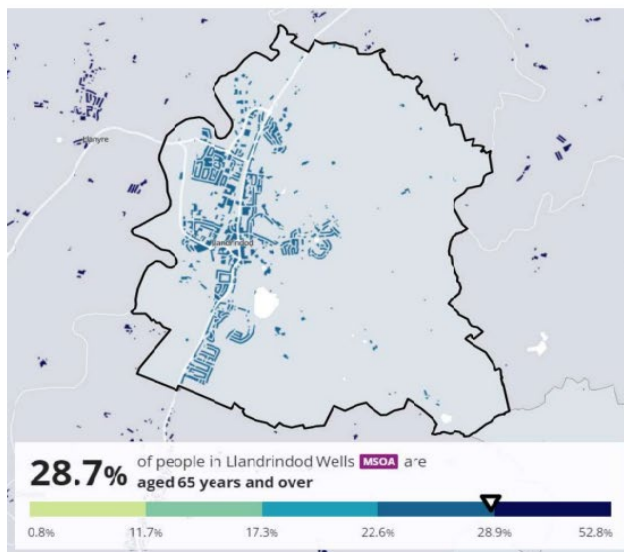
Age groups	Proportion of population
Aged 15 years & younger	14.9%
Aged 16 – 64 years	56.3%
Aged 75 years & over	12.4%
Ethnic group	Proportion of population
White	98.6%
Other Ethnic Populations	1.4%
Deprivation	
33.9% of households deprived in one dimension	
13.8% of households deprived in two dimensions	
2.3% of households deprived in three dimensions	
0% of households deprived in four dimensions	

33.2% of households are one-person households
 This MSOA has none of its 5 LSOAs within the most deprived 20% of all Welsh LSOAs.

Llandrindod Wells MSOA

- This MSOA has 1 of its 3 LSOAs within the most deprived 20% of all Welsh LSOAs
- 43.3% of households are one-person households
- 15.1% of the population are 75 years and over
- 27.7% are aged 65 years and over

Llandrindod Wells MSOA



Age groups	Proportion of population
Aged 15 years & younger	15.3%
Aged 16 – 64 years	56.0%
Aged 75 years & over	15.1%
Ethnic group	Proportion of population
White	96.8%
Other Ethnic Populations	3.2%
Deprivation	
33.8% of households deprived in one dimension	
17.4% of households deprived in two dimensions	
5.5% of households deprived in three dimensions	
0.3% of households deprived in four dimensions	

43.3% of households are one-person households

This MSOA has 1 of its 3 LSOAs within the most deprived 20% of all Welsh LSOAs.

11.3 South Cluster

The South Powys Cluster is made up of four GP Practices, providing services to a rural population of approximately 36,000 patients at the following locations:

- Hay-on-Wye
- Brecon
- Crickhowell
- Ystradgynlais

Six Dental practices located in the following towns:-

- Brecon
- Crickhowell
- Ystradgynlais
- Mobile Dental Unit

Eight Community Pharmacies located in the following towns:-

- Brecon
- Crickhowell
- Ystradgynlais
- Talgarth
- Lower Cwmtwrch
- Hay

Six Optometry practices located in the following towns:-

- Brecon
- Hay on Wye
- Crickhowell
- Ystradgynlais

There are three Community hospitals, located in Brecon, Bronllys and Ystradgynlais providing a range of differing services including Outpatients services, Minor Injury Unit, X-ray Facilities, Therapy services, Minor Surgery and Endoscopy, Midwife led Birth Centre, Therapy Services, inpatient general medical ward, Dialysis, Midwife-led birth centre, Inpatient General / Medical Ward, and elderly Mental Health Ward, and day hospital services. Secondary care Ophthalmology services are provided from Brecon and Ystradgynlais.

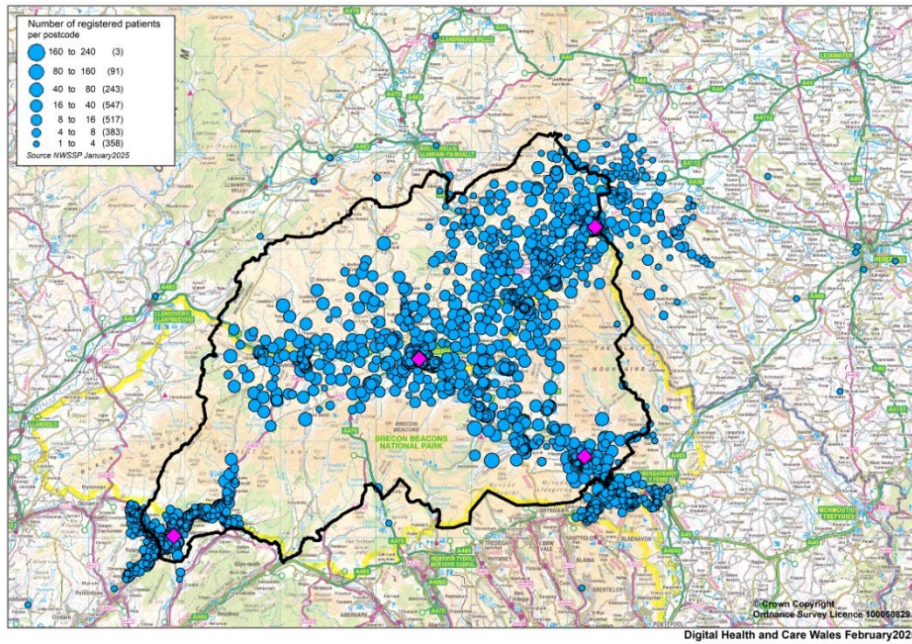
There is also a Children's Centre, providing a range of community clinics for children and young people, along with dedicated Mental Health Resource centres, located in Brecon and Ystradgynlais, providing a range of community mental health services.

There are a range of Third sector services provided across the South Powys Cluster, including mental health, home support and befriending services.

Powys Association of Voluntary Organisations working in partnership with Powys County Council and Powys Teaching Health Board, provide a Community Connectors Service, a Cancer Community Connector, a Health and Wellbeing engagement service, and a Mental Health Information service.

The below map highlights the South-Cluster GP registered patients and location of Optometry practices:

Powys Teaching Health Board - South Cluster registered patients

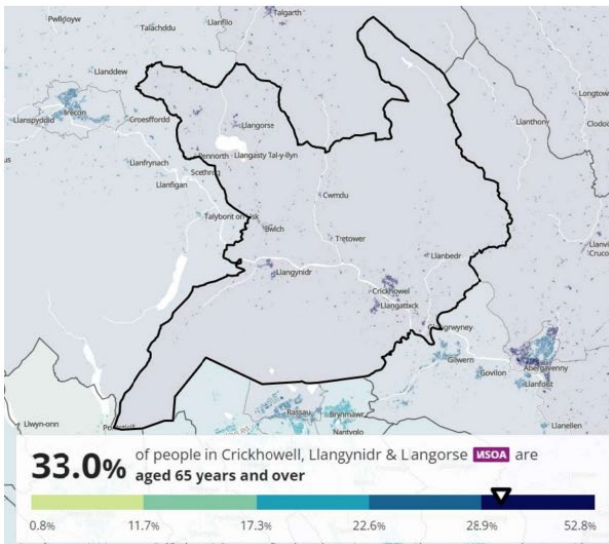


Jackson & Gill	Hay on Wye
Crickhowell Optometrists	Crickhowell
First Optic	Brecon
Brecon Specsavers	Brecon
Vision Express	Brecon
David R Jenkins	Ystradgynlais

Crickhowell, Llangynidr and Llangorse MSOA

- This MSOA has none of its 4 LSOAs within the most deprived 20% of all Welsh LSOAs
- 28.4% of households are one-person households
- 14.6% of the population are 75 years and over
- 33.0% are aged 65 years and over

Crickhowell, Llangynidr & Llangorse MSOA



Age groups	Proportion of population
Aged 15 years & younger	14.0%
Aged 16 – 64 years	53.0%
Aged 75 years & over	14.6%

Ethnic group	Proportion of population
White	97.2%
Other Ethnic Populations	2.8%

Deprivation
34.0% of households deprived in one dimension
9.2% of households deprived in two dimensions
1.9% of households deprived in three dimensions
0.1% of households deprived in four dimensions

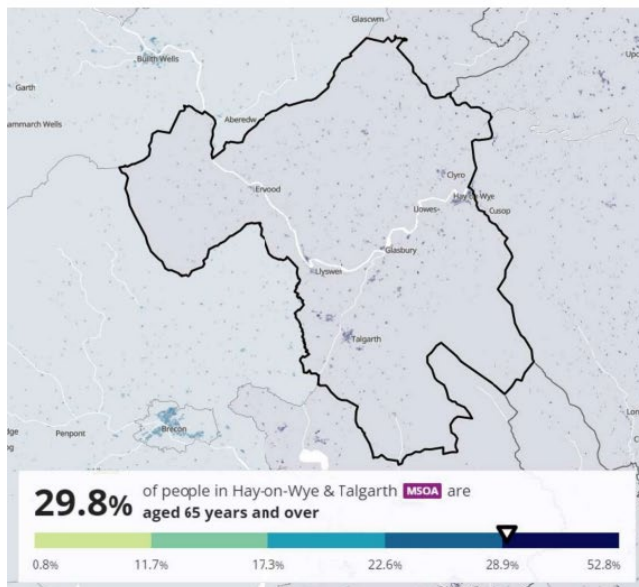
28.4% of households are one-person households

This MSOA has none of its 4 LSOAs within the most deprived 20% of all Welsh LSOAs.

Hay on Wye and Talgarth MSOA

- This MSOA has none of its 5 LSOAs within the most deprived 20% of all Welsh LSOAs
- 34.9% of households are one-person households
- 13.3% of the population are 75 years and over
- 29.8% are aged 65 years and over

Hay-on-Wye & Talgarth MSOA



Age groups	Proportion of population
Aged 15 years & younger	14.5%
Aged 16 – 64 years	55.7%
Aged 75 years & over	13.3%

Ethnic group	Proportion of population
White	98.4%
Other Ethnic Populations	1.6%

Deprivation
35.3% of households deprived in one dimension
10.3% of households deprived in two dimensions
2.1% of households deprived in three dimensions
0.1% of households deprived in four dimensions

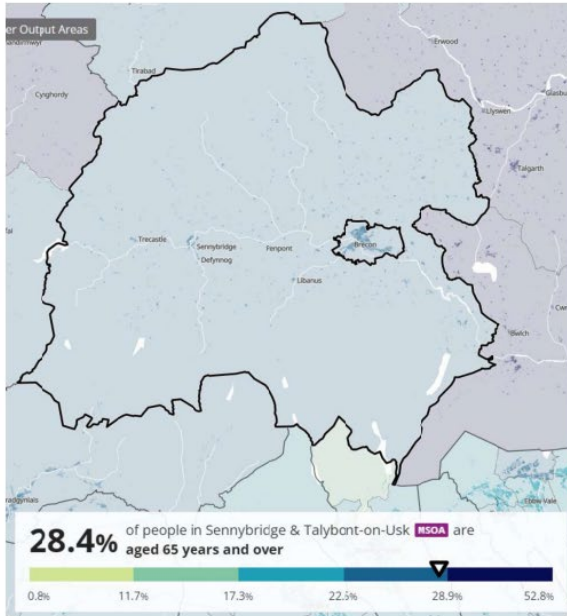
34.9% of households are one-person households

This MSOA has none of its 5 LSOAs within the most deprived 20% of all Welsh LSOAs.

Sennybridge and Talybont on Usk MSOA

- This MSOA has none of its 4 LSOAs within the most deprived 20% of all Welsh LSOAs
- 26.8% of households are one-person households
- 12.5% of the population are 75 years and over
- 28.4% are aged 65 years and over

Sennybridge & Talybont-on-Usk MSOA



Age groups	Proportion of population
Aged 15 years & younger	14.7%
Aged 16 – 64 years	56.9%
Aged 75 years & over	12.5%

Ethnic group	Proportion of population
White	98.7%
Other Ethnic Populations	1.3%

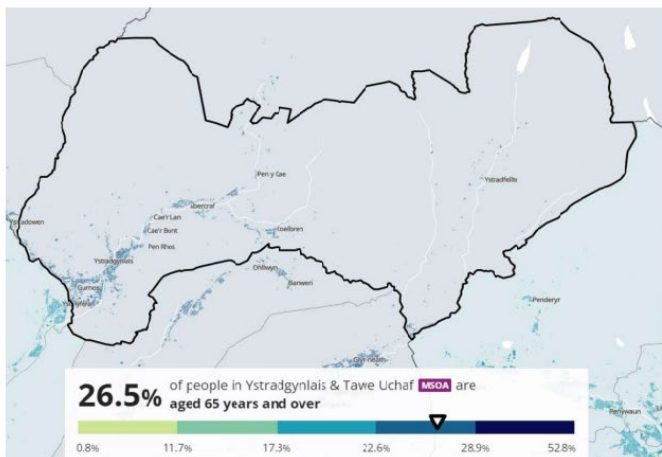
Deprivation
32.6% of households deprived in one dimension
10.9% of households deprived in two dimensions
1.3% of households deprived in three dimensions
0% of households deprived in four dimensions

26.8% of households are one-person households
 This MSOA has none of its 4 LSOAs within the most deprived 20% of all Welsh LSOAs.

Ystradgynlais and Tawe Uchaf MSOA

- This MSOA has 1 of its 6 LSOAs within the most deprived 20% of all Welsh LSOAs
- 34.2% of households are one-person households
- 12.7% of the population are 75 years and over
- 26.5% are aged 65 years and over

Ystradgynlais & Tawe Uchaf MSOA



Age groups	Proportion of population
Agec 15 years & younger	16.2%
Agec 16 – 64 years	57.3%
Agec 75 years & over	12.7%

Ethnic group	Proportion of population
White	97.4%
Other Ethnic Populations	2.6%

Deprivation
35.5% of households deprived in one dimension
18.3% of households deprived in two dimensions
5.0% of households deprived in three dimensions
0.1% of households deprived in four dimensions

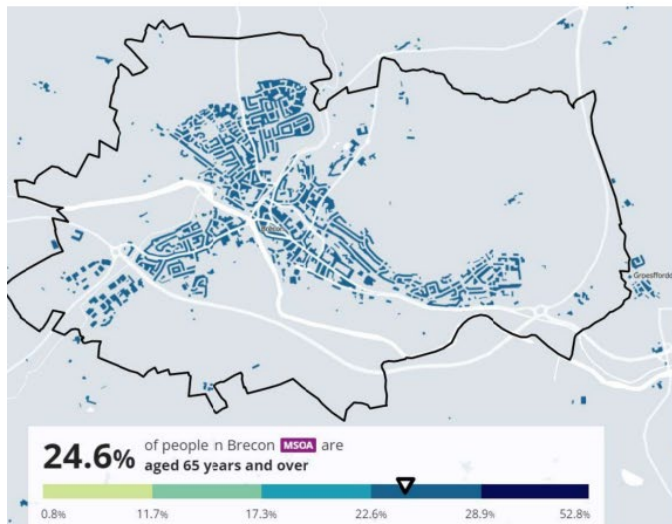
This MSOA has 1 of its 6 LSOAs within the most deprived 20% of all Welsh LSOAs. That same LSOA is also within the most deprived 10% of all Welsh LSOAs.

34.2% of households are one-person households

Brecon MSOA

- This MSOA has none of its 5 LSOAs within the most deprived 20% of all Welsh LSOAs
- 38.0% of households are one-person households
- 11.9% of the population are 75 years and over
- 24.6% are aged 65 years and over

Brecon MSOA



This MSOA has none of its 5 LSOAs within the most deprived 20% of all Welsh LSOAs.

Age groups	Proportion of population
Aged 15 years & younger	16.5%
Aged 16 – 64 years	59.0%
Aged 75 years & over	11.9%

Ethnic group	Proportion of population
White	91.6%
Other Ethnic Populations	8.4%

Deprivation
34.5% of households deprived in one dimension
13.9% of households deprived in two dimensions
2.9% of households deprived in three dimensions
0.2% of households deprived in four dimensions

38.0% of households are one-person households

11.4 Optometry Professional Collaborative

The pan-Powys Optometry Professional Collaborative, representing all practices within the three clusters and including mobile providers, has seen good engagement from practitioners with leads in place from each cluster.

However, as of Quarter 4 2024/25, there are no Optometry leads due to competing time commitments. The Optometric Advisor is now chairing the Collaborative and attending Cluster meetings.

Previous Optometry cluster projects have included funding and support for qualifications and workforce in the North and Mid Clusters, and a primary care ROVI pilot in the South Cluster. Priorities for 2025/26 include continuing to engage all contractors with Collaborative attendance and supporting cluster priorities. The Health Board will work with the Regional Optical Committee and Optometry Wales to support Collaborative members and seek to recruit leads for all three cluster areas.

12. Transition/Transformation Plans to meet future eye health needs

Due to an ageing population and increasing prevalence of most major eye conditions, there is an increasing demand for all levels of WGOS across PTHB. Access to Optometry services within Powys has reduced over the years with practices closing, however the demand for WGOS 1-3 continues to be met through reasonable geographical coverage across the Health Board, with the notable exception of service gaps in some main towns and in particular North-West Powys.

Currently across Powys there is a very small cohort of Optometrists with specialist skills and qualifications to provide WGOS4 services. This includes no WGOS 4 provision in some clusters, or a low level of service provision, providing an inequitable service offer.

The complexity of Powys secondary care pathways and the lack of available data regarding secondary care activity makes it difficult to identify the true demand of services that can be transferred into primary WGOS 4. However, based on the Powys population eye health demographics and the RNIB future predictions for prevalence of ocular conditions, it is clear that there is a particular need to focus on increased service delivery for WGOS4 including glaucoma, medical retina and hydroxychloroquine within primary care optometry.

The estimated increase in sight loss prevalence highlights the increased demand on eye care services. This reflects the ongoing need to support workforce development across PTHB to meet the future WGOS demand.

The PTHB aspiration is for a minimum of 50% of Practices to be delivering the full range of WGOS services.

The Health Board's priority, in order to meet future demand, will be to continue to support the provision and development of WGOS services including supporting and promoting the optometry workforce to expand their skill set and gain the required accreditation.

	Current service provision	Planned increase 2025/26	Future aspiration 2025 - 2028
WGOS 4			
Glaucoma Filtering (Higher Certificate Glaucoma qualification requirement)	Mid cluster provision only Two practices currently providing, located in Llandrindod Wells & Builth Wells	Two practices in the north cluster anticipated to join the service in Q4 2025/26 (Welshpool and Newtown). This will provide a total of 27% of Powys coverage, but only in the north and mid cluster area. The mid cluster may have capacity to support south cluster referrals. This will need to be scope with the mid practices.	To encourage South Cluster practices to progress qualification required through HEIW. To aspire to a minimum of 50% practices offering the service.
Glaucoma Monitoring (Professional Certificate Glaucoma qualification requirement)	No provision currently in place	Eight practices are anticipated to start providing in 2025/26, with coverage across all three clusters. Three practices in North Powys (Welshpool x 2, Newtown x1). Two practices in mid Powys (Llandrindod Wells and Builth wells). Three practices in south Powys (Crickhowell, Brecon and Ystradgynlais). This will provide 53% of coverage across Powys.	To maintain a minimum of 50% of practices offering the service.
Medical Retina monitoring and filtering (Professional Certificate Medical Retina qualification requirement)	No provision currently in place	Nine practices anticipated to start providing Medical Retina services in 2025/26, both monitoring and filtering, providing coverage across all three clusters. Five practices in North Powys (Welshpool x 3, Newtown x 2). Two practices in mid Powys (Llandrindod Wells and Builth wells). Two practices in south Powys (Crickhowell and Brecon). This will provide 60% of coverage across Powys.	The assumption is that the Medical Retina provision will be sufficient to meet health board demand. To maintain a 60% service offer.

<p>Hydroxy-chloroquine monitoring:</p>	<p>No provision currently in place</p>	<p>Two practices in North Powys (Welshpool and Newtown) who meet the necessary qualification and equipment requirement.</p> <p>Anticipated service due to commence in 25/26.</p> <p>This will provide 13% of coverage across Powys, but in the north cluster only.</p>	<p>To aspire to a minimum of 50% practices offering the service</p>
<p>WGOS 5</p>	<p>North and South cluster service provision already in place</p> <p>Five practices providing</p> <p>North Cluster – Welshpool x 2, Newtown x 1</p> <p>South Cluster – Brecon x 2</p>	<p>Anticipated that a further two practices will provide this service in 2025/26.</p> <p>The service will be extended to Crickhowell (south cluster) and Llandrindod Wells (mid cluster.</p> <p>This will provide 47% of coverage across Powys, available in all three clusters</p>	<p>To encourage a further mid Cluster practice to progress required qualification through HEIW</p> <p>To aspire to a minimum of 50% practices offering the service</p>
<p>Mobile Provision</p>	<p>4 mobile providers delivering core level 1 & 2 services</p> <p>1 mobile provider delivering WGOS 3 services only</p> <p>Poor access being offered to Powys residents due to the geography of the county and the mobile providers being placed out of county.</p>	<p>To engage with existing providers to further understand the Powys offer alongside confirmed core hours</p>	<p>To secure additional mobile providers and increase access offer to patients</p>

Implementation of WGOS4 will enable opportunities for referral management support across both PTHB in-reach and commissioned services and pathways.

The implementation and roll out of WGOS 4 will support the 'shift left' of services by enabling care closer to home and freeing up Ophthalmology capacity within community hospitals in reach services and secondary care. It is important to note that Patients will continue on existing secondary care pathways until WGOS pathways can be implemented.

The Health Board's priority, in order to meet future demand, will be to continue to support the provision and development of WGOS services, including supporting and promoting the optometry workforce to expand their skill set and gain the required accreditation.

Optometry capacity to undertake WGOS extended services needs to be considered against the following factors

- practices capacity to deliver
- performer capacity to deliver
- the location of the service (due to rurality)
- other available WGOS services in the practice/cluster, and
- to not be at the detriment of the delivery of mandatory services (WGOS 1 & 2)

The pace of change to implement WGOS pathways is dependent on the above factors.

Unfortunately, due to the geography and size of optometry practices in Powys, there is, and will continue to be a high risk of potential single points of failure for WGOS pathways. WGOS pathways are reliant on individuals with the required qualification working in practices and service provision can be impacted by sick leave, retirement, and optometrists moving out of the area. Therefore, alternative pathway arrangements need to be considered to mitigate this potential eventuality, so patients do not get lost in the system.

The WGOS 4 service delivery cannot be to the detriment of WGOS mandatory services. WGOS 1 & 2 has to be maintained. Practitioner capacity to meet WGOS service demand along with the continuation of WGOS 1 & 2 will need to be continually reviewed and monitored.

To meet the current and future demands, The Health Board, through its primary care, Academy and Cluster teams, will continue to work with HEIW to support targeted workforce upskilling in the necessary areas.

Cluster funding opportunities and initiatives that allow optometry workforce development including succession planning are being progressed to support the implementation and ongoing sustainability of WGOS services across cluster footprints.

13. References

1. Powys.gov.uk. Accessed 27/02/2025. 2025. <https://en.powys.gov.uk/article/11139/Wellbeing-Information-Bank-View-information-about-Powys-population>.
2. Powys Regional Partnership Board. Population Needs Assessment. 2022.
3. Powys Public Service Board. Well-being Assessment. 2022.
4. Powys Teaching Health Board. Integrated Plan 23/24-25/26. 2023.
5. Welsh Government. Welsh Index Multiple Deprivation. WG. Accessed 27/02/25, 2025. <https://statswales.gov.wales/Catalogue/Community-Safety-and-Social-Inclusion/Welsh-Index-of-Multiple-Deprivation>
6. Powys.gov.uk. Accessed 27/02/2025. 2025. <https://en.powys.gov.uk/article/11119/Wellbeing-Information-Bank-View-information-about-deprivation-WIMD-2019>.
7. NHS Wales. WGOS 1&2 Clinical Manual. 2025.
8. Wales Council of the Blind. Accessed 27/02/2025. 2025. <https://wcbccd.org.uk/perspectif/powys>.
9. RNIB. RNIB Sight Loss Data Tool Version 5.2 - Powys Teaching Health Board sight loss briefing. 2023.
10. NHS Wales. Primary Care Information Portal, Prevalence Summary. 2023/24.
11. Welsh Government. National Survey for Wales. Last updated July 2023.
12. Office for National Statistics. Census. 2021.
13. Powys.gov.uk. Accessed 27/02/2025. 2025. <https://en.powys.gov.uk/article/11116/Wellbeing-Information-Bank-View-information-about-welsh-language>
14. Welsh Government. Welsh Language Standards in Primary Care. 2019.