

BRO DDYFI COMMUNITY HOSPITAL

Redevelopment Newsletter



News Update

Visible progress is being made to the redevelopment of Bro Ddyfi Community hospital as the steel frame is erected and new floor slabs are laid. To mark this important milestone there will be a signing of the steelwork / topping out ceremony, which we are hoping will be able to take place in the coming weeks as the pandemic restrictions are eased. Works are currently on programme with the facility anticipated to be available in early 2023.

The £15M new community hub in Machynlleth will see primary, community and social care being incorporated into the hospital site providing an integrated health and well-being facility for the local community. The programme also includes essential works to improve the fabric of this locally significant historic building. The project provides an opportunity to reshape the way that community health and well-being services are delivered enabling the delivery of care closer to home .

Community Benefits

The project brings wider community benefits and social value to the area such as employment, training and apprenticeship opportunities. Targets include providing a minimum of 10 local jobs 10 apprentices and 300 weeks of training.

| Benefit | Target | Current |
|--------------------|-------------------------------|------------------------------|
| Jobs Created | 520 Weeks 10 people | 70 weeks 2 people |
| Training Weeks | 300 Weeks | 180 weeks |
| Apprentices | 10 people | 2 people |
| Community Events | 2 | 1 |
| School engagements | 100 hours 300 interactions | 38 hours 407 interactions |

As part of the project teams commitment to ‘social value’, lead contractor Willmott Dixon have been engaging with local schools providing careers advice as well as a number of STEM (Science, Technology, Engineering, Maths) activities.

A competition to design the hoarding to the front of the hospital was launched during the Autumn term with students from Ysgol Bro Hyddgen Primary School with the entries being judged by Powys Teaching Health Board. The team were hugely impressed with the quality of the entries received and are looking forward to announcing the winners and unveiling the new hoarding. A presentation ceremony will be arranged once the completed hoarding has been delivered to site.

We look forward to providing an update on these and other social value initiatives in our next newsletter.

“It’s fantastic to see works progressing so well, and to watch the hospital taking shape literally outside our window. This facility will provide much needed additional space for the practice and we are looking forward to finally being integrated onto the hospital site”

Dr Sara Bradbury-Willis
GP Partner—Dyfi Valley Health



January Progress Photos - Steel Frame Erection

Environment & Ecology



Our natural environment is so important to all of us here in Powys. We share everyone’s disappointment regarding the sad but unavoidable need to remove trees from the front of the hospital. Despite the best efforts of the whole team, the remaining 6 trees detailed in the original Planning approval, located at the rear of the site, will also need to be removed in order to support project delivery. A full ecological survey was undertaken and the trees have been identified as low or moderate quality and will be replaced by more appropriate species.

PTHB want to reassure everyone that environmental and ecological improvements remain central to this development. As well as contributing to Welsh government targets for public sector organisations to be carbon neutral by 2030, our ecology plans include a commitment to provide two replacement trees for every tree felled both on site and in the wider local area. Landscaping plans for the site have been carefully considered to support biodiversity and create habitats for local species including bats, swifts, house martins, hedgehogs, newts and insects.

“In my role as Director of Environment I am particularly excited by the decarbonisation and ecology opportunities that this major Welsh Government investment brings to the local area. We look forward to developing the engagement projects which will ensure the building is a true community facility”

Jamie Marchant (SRO)
Director of Environment

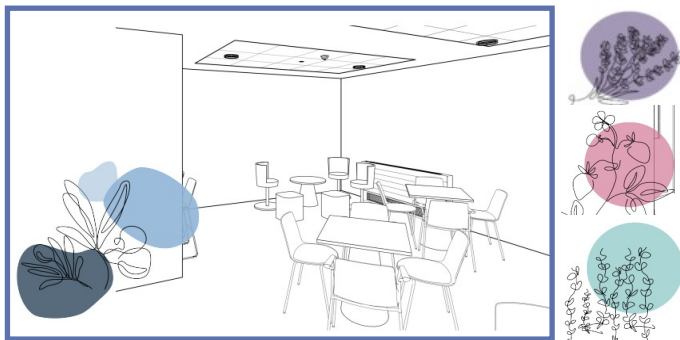
As part of these plans we are very excited to be launching 3 community engagement projects:

Community / Sensory Garden - to provide a wellbeing space which could also be used ‘therapeutically’ for other services such as mental health and/or rehabilitation. The design of a ‘drop off canopy’ will also act as a sign-post for the new entrance and give an opportunity to celebrate the history and significance of this site.

Artwork – to include the reuse of wood from felled trees, artwork, sculptural elements and internal artwork incorporating local art/poetry.

Trees, landscaping and ecology – to explore replanting opportunities both on the site and more widely in the town / community.

Engagement plans are currently finalised and we are working closely with community consultees to identify community groups and partners to take these important projects forward. We will then be arranging a series of workshops including our Art in Health coordinator , Environment and Sustainability Manager and other local representatives.



February Progress Photos - Front Block Roof