

BRO DDYFI COMMUNITY HOSPITAL

Redevelopment Newsletter

News Update



Works continue to progress at pace with visible changes taking place daily. The main building is now generally weathertight and internal fit-out is progressing, the remaining building envelopes are coming together and the shift to internal fit out will now take place.

This month we have an updated project QR code. Simply scan the code (pictured left) using the camera on any mobile device to access the latest 'Matterport' model. The model allows you to take a 360° walk through the site and see all the latest construction progress.

Taking Shape

Since the last newsletter the buildings are beginning to really take shape. The new dining room, pictured below will include glazed curtain walling situated where the grey sheeting is placed.



The new dining room under construction

The new dining room which will become a patient, visitor and staff café will be to the right of the new entrance and will be an ideal place to sit and relax with a tea or coffee before your appointment or while you are waiting for a loved one to return from an appointment. The café will also be serving food for staff and visitors.



Design of the new front entrance with view to Café area

The café will form a part of the Integrated Community Hub we are creating at Bro Ddyfi Community Hospital. The objectives of an innovative community hub is to improve access to health and social care, well-being, prevention, and health promotion services.

The café will provide a space for staff and visitors to the hospitals to use and enjoy. As we move forward from the peak of the Covid-19 pandemic we are excited to welcome visitors back to our hospitals.



August Progress Photos

Internal Progress

Internal progress is clear as the internal partitions are being finalised, ready for electrical drops. The mechanical and electrical first fixes are taking place in the corridors, during the next period the Willmott Dixon team will be undertaking the second fix. Use the QR code pictured left to keep up to date with the latest internal progress and take a virtual tour of our site.

"Health Visiting Team has been based at the hospital for many years, offering support services to every family with pre-school children in the area. Our team consists of Health Visitors, Nursery Nurse, Health Lifestyle Support Worker and Admin.

The team are looking forward to having modern accessible facilities for our clients to attend with the additional benefits of close working partnership with colleagues. Having modern accessible facilities for our clients to attend will be wonderful with the additional benefit of close working partnership with colleagues.

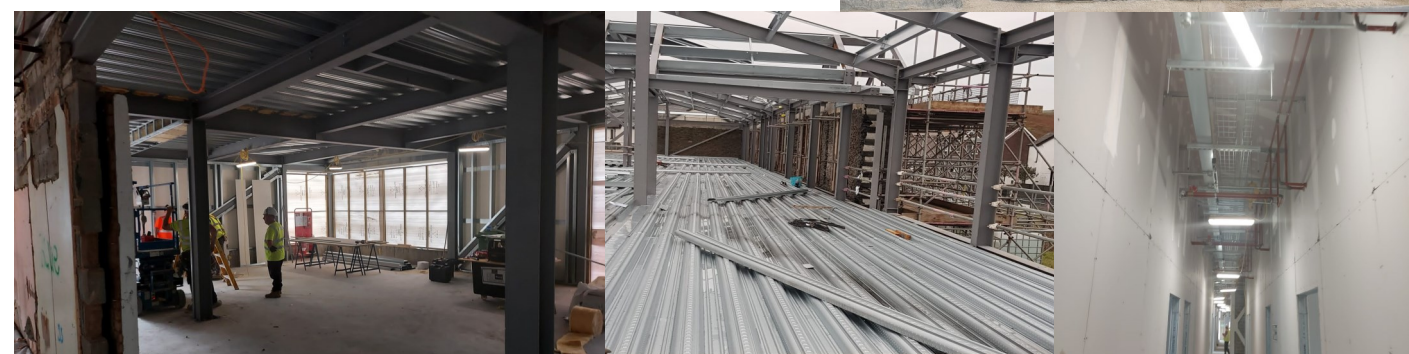
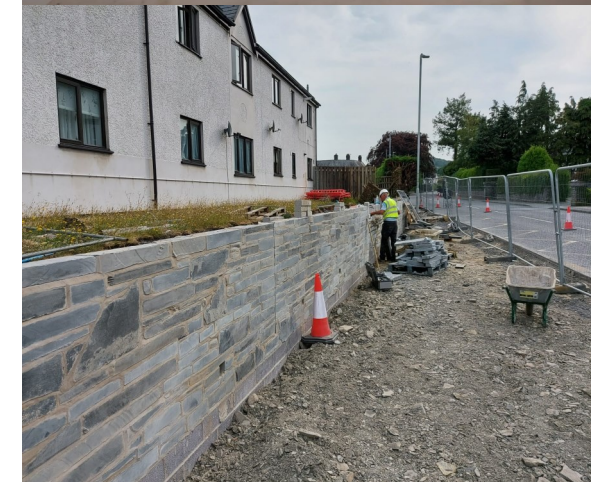
We are all looking forward to seeing the end result."

Health Visitor Team, Machynlleth

External Progress

The external stone wall has been finished. While building the wall the team incorporated a plaque with the roman numerals 'MMXXII'. This plaque will be present for generations to come and will be a reminder of the significant investment made in 2022 to reconfigure and refurbish the hospital creating an integrated hub for the local community.

As the envelope of the building is moving towards being weathertight, the majority of the work will shift to the internal fit out of the buildings. During this shift the progress to visitors and staff will appear reduced, but be assured that work internally is progressing at pace. Progress updates will be available through the bi-monthly newsletters and the project Matterport QR code.



August Progress Photos