

News Update



This month we are delighted to launch our project QR code. Simply scan the code (pictured left) using the camera on any mobile device to access the latest 'Matterport' model. The model allows you to take a 360° walk through the site and see all the latest construction progress. Currently works continue to progress at pace with visible changes such as new window installation, and the removal of the scaffolding to the front façade. Later in the programme works will be undertaken to make good the render and to retain the original features of Bro Ddyfi Community Hospital. However, as the building becomes watertight and construction activities begin to focus on the internal refurbishment the model will allow the community to continue to follow progress. Updated codes will be available in future additions of this newsletter.

Community Benefits

The project brings wider community benefits and social value to the area such as employment, training and apprenticeship opportunities. Community benefits also includes involving the community in aspects of the reconfiguration.



Unveiling our new hoarding designed by pupils of Ysgol Bro Hyddgen

In May we had the pleasure of being joined on site by pupils of Ysgol Bro Hyddgen to unveil our new hoarding.

In December we asked for posters on the theme "what Machynlleth means to me".

All the entries were fantastic so as well as awarding prizes to the winner and two runners up we decided to include entries on the finished design which will be displayed on the hoarding during construction.



The pupils were also given a tour of the site by Willmott Dixon and had the opportunity to ask questions about the project. A big thank you to all that attended and supported the day!

"each time I arrive at the Hospital the progress is palpable. This is an exciting development for the hospital and we are really looking forward to moving into the new facility."

Having such a large construction project on a busy hospital site was always going to present certain challenges, however the contractors are pleasant and helpful and the day-to-day impact on services is being kept to a minimum – so thank you to all those involved."

Sally Davies
Hospital Services Manager



June Progress Photos

Community Engagement Sessions

During May we launched our community engagement events, inviting representatives from local community and social care groups alongside hospital and Health board staff representatives to share ideas on three community projects:

- Therapeutic / Sensory Garden
- Art in Healthcare
- Trees, Ecology and Landscaping

The day was a positive opportunity to get together to discuss the reconfiguration, at our first 'in person' meeting since the Covid-19 pandemic began.

These initial engagement sessions were to gauge interest in the projects and develop a plan going forward. Our main aim was to meet with groups and members of the community and we were delighted to have an informed and lively conversation around what could be included to reflect the Community 'hub' development at Bro Ddyfi Hospital.

Some of the key actions from the events include:

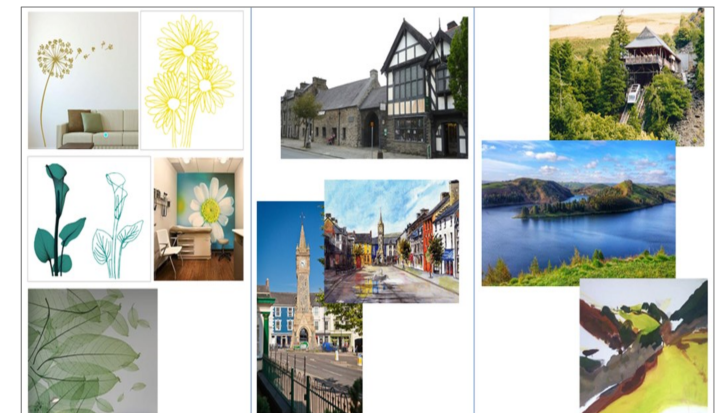
- Working with local garden groups to develop plans for a sensory garden to provide 'a fully accessible space with raised planters, integrated seating and shade loving plants'
- Developing garden steering group to discuss design, management and ongoing maintenance
- Explore opportunities to replace the cherry blossom tree at the front of the hospital in addition to the replanting commitment in the Approved Plans
- Explore opportunities to support the planting of a further 12 trees outside the hospital footprint
- Develop 3 art commissions to include; a feature sculpture at the hospital entrance, a wall mural within the main entrance and a series of poems / transcriptions to be displayed as wall art
- Provide an 'exhibition space' to show case local artwork.

"Having worked at the hospital for over 28 years, I can see how vital this investment is for the staff, services and the local community. The front block in particular had a lot of issues including leaks and heating failures - the new facility will have a really positive impact. It was great to be part of the community engagement sessions which demonstrated how important this building is to the people of Machynlleth"

Eleri Jones
District Nurse Team Leader

Art in Health

The inclusion of art in healthcare creates a more welcoming environment for patients, visitors and staff. It has also been associated with; improving wellbeing, reducing negative emotions, providing positive distraction and supporting holistic healing.



This project also offers an opportunity to showcase local art and ensure that the investment reflects and embraces the local community.

Suggested themes include:

- Nature, environment & weather
- Heritage & local history
- Flora & fauna
- Machynlleth & Dyfi Valley community



June Progress Photos