

BRO DDYFI COMMUNITY HOSPITAL

Redevelopment Newsletter



Eluned Morgan, Minister for Health and Social Services Officially Opening The Facility.

News Update

We are delighted to share that Bro Ddyfi Community Hospital is now open and operational. The facility opened to patients at the beginning of May 2023.

Eluned Morgan, Minister for Health and Social Services officially opened the building on Thursday the 25th of May.

Two years on from the construction start on site, the new Bro Ddyfi Community Hub is operational. The £15M investment sees primary, community and social care being incorporated into the hospital site providing an integrated health and well-being facility for the local community.

The Minister for Health and Social Services, Eluned Morgan said: “It was a pleasure to officially open the redevelopment of the Machynlleth Bro Ddyfi Community Hospital and see first-hand the difference it will make to the local community.”

“This is an excellent example of how Welsh Government funding is being used to reshape the way community health and wellbeing services are delivered to ensure better access to doctors, nurses, and other healthcare professionals closer to home.”

“I have been involved in this project from the development of the business case and I feel very proud and privileged to have been able to see it through to completion. I would like to say a huge thank you to staff and patients for their support and understanding throughout the project which I know has been challenging at times. The new facilities are fantastic and will offer significant benefits for the local community”

Louise Morris
Head of Capital & Bro Ddyfi Community Hospital Reconfiguration Project Manager



Pictured above left: Louise Morris, Head of Capital showing Eluned Morgan, Minister for Health and Social Services the facility pre-investment.



Pictured above right: Eluned Morgan, Dr Sara Bradbury-Willis - GP Partner at Ddyfi Valley Health and Louise Morris.

COMPLETION PHOTOGRAPHS



Adult Mental Health Waiting Area



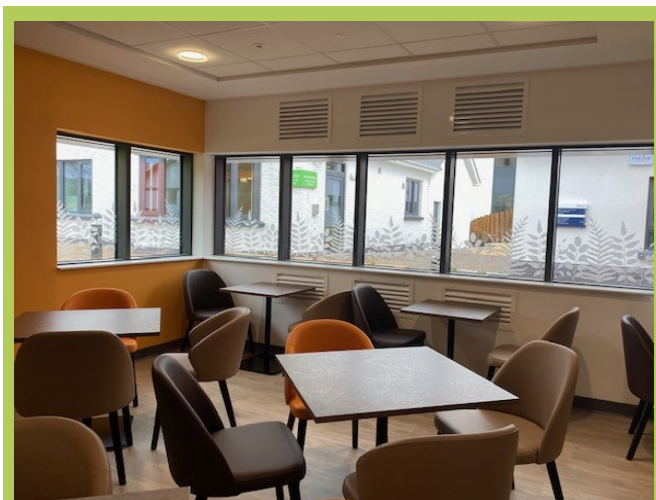
Bro Ddyfi Community Hospital Main Entrance



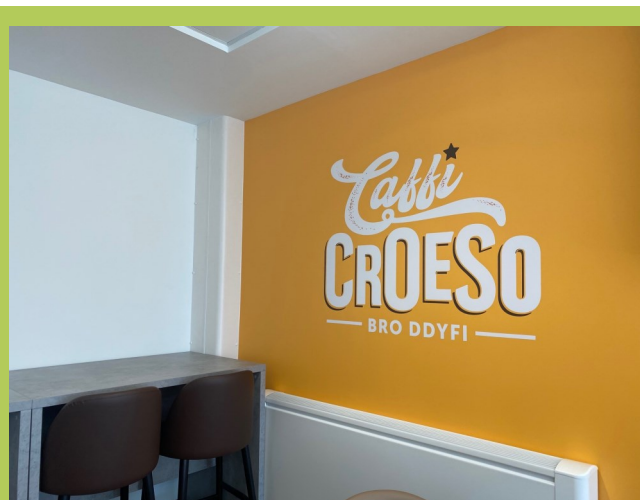
Bro Ddyfi Community Hospital Wayfinding and Main Entrance



Sensory Garden



Seating Area In Caffi Croeso,



Caffi Croeso – The new Café Facilities