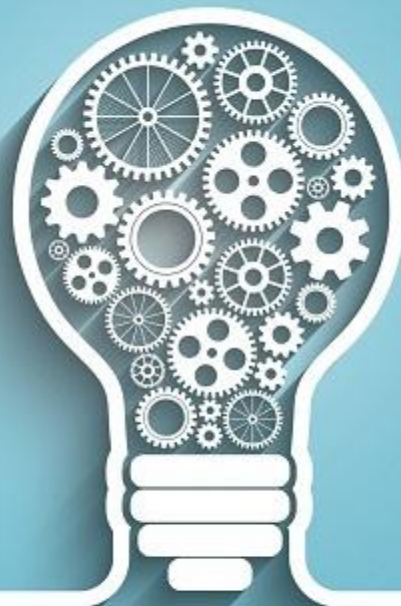


# Powys Teaching Health Board Research and Development Strategy 2025- 2028

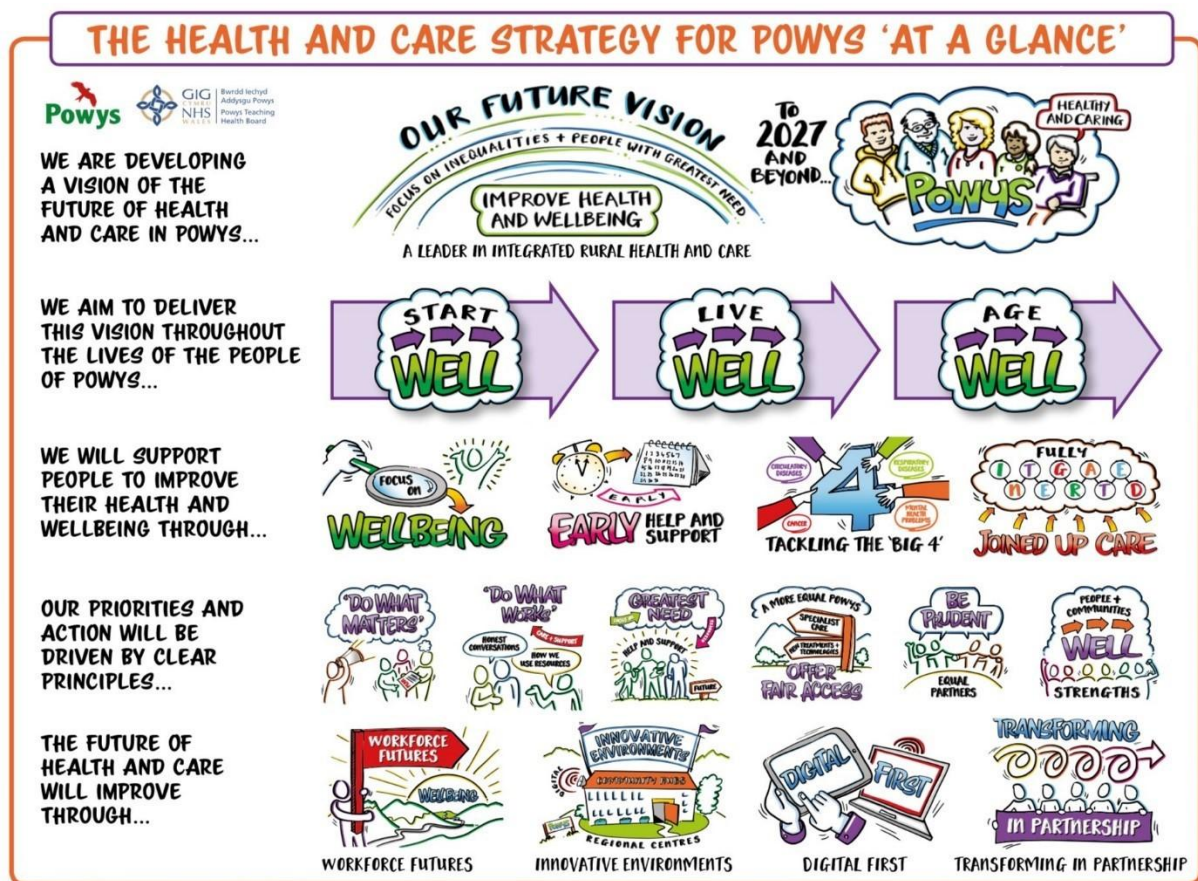
Research in Powys



PTHB is both a provider and a commissioner of healthcare for the population of Powys providing access to services in both Wales and England. We can demonstrate a strong track record in taking a 'whole system approach' to planning care, with partners. As a primary care & community care service leader delivering in a very rural setting Powys is well placed to support the shift of secondary care provision into primary and community care service delivery.

Powys has a network of community hospitals and centres, local primary care teams, visiting consultants and specialists, social care and voluntary organisations who all work together to provide a wide range of health services in our local communities.

Our Health and Care Strategy 'A Healthy, Caring Powys' is the anchor strategy for health and care in Powys as a region, and as such sets out the transformation ahead. This includes the support and care for the whole of the Powys population, enabling people to start well, live well and age well.



Through our Better Together Portfolio of work we are working to improve quality and outcomes for the population of Powys by ensuring future models of care and configuration of services deliver viable and economically sustainable services that meet the needs of the rural population of Powys.

The Duty of Quality means that we have a legal responsibility to continually improve the quality of the services we provide. It also reinforces the importance for research supportive organisations to adopt a system-wide way of working to provide safe, effective, person-centred, timely, efficient, and equitable health care in the context of a learning culture.



We remain committed as an organisation to become a true learning organisation. We will focus on delivering the highest possible quality care, meeting the health and care needs of people using our services, and improving the health outcomes of the population we serve.

This strategy highlights our creativity, passion, expertise and our commitment to learn from experiences. Our quality pledge and ambitions aim to put quality, equality and learning at the heart of our service.

## Research in Powys

Improving health and care services in Wales using evidence-based approaches is fundamental to improving the quality of care and putting the public at the heart of everything. Research makes a real difference to improving health outcomes and to the lives of patients and people in our communities.

Research helps improve the services we deliver in Powys and helps advance treatments to find better options for those who use our services and ensures we are providing better treatments for future generations.

We are committed to doing research that is inclusive, meaningful and drives improvements in services and the wellbeing of service users, carers and staff. We will do that by research supporting clinical services to improve the quality of care and treatment offers. Healthcare research and development and innovation will improve the quality of care for our patients and we will achieve this by:



## 1. Develop workforce capability and satisfaction by providing a learning environment which actively promotes research.

Research will enhance our employees working lives and will be delivered by our excellent and inclusive workforce. Our workforce will be supported with effective training and development to meet their potentials:

- Increase the breadth of staff skills and experience, through non-commercial and commercial research delivered in partnership with our staff
- Identify emerging talent and support careering into research; ensure academic involvement and leadership
- Work with People & Culture Directorate to use research as motivator for recruitment and retention

## 2. Improve the quality and impact of our activities

Research will be a driver and contributor for improving services and the quality of care provided across all locations, ensuring equity of access to research across all services and locations. We contribute towards the evidence-base that underpins improvements in healthcare outcomes. Research will be a driver and contributor to:

- Increase understanding across Powys of the role of research in improving care services
- Deliver research that is meaningful and important to service users, carers, staff and the organisation
- Support services to embed high quality evidence into practice

- Link Quality Improvement and research to increase continuity and impact

### **3. Grow research and innovation activity in areas of strength and opportunity for Powys**

Our rurality and focus on Primary and Community Care present us with some unique challenges that can make it more difficult to advance research and innovation. These challenges also present us with opportunities to lead the way in developing research and taking innovation forward in across a rural integrated health and care system:

- Undertake research that is inclusive, meaningful, and drives improvements in services and the wellbeing of service users, carers and staff
- Provide appropriate support to deliver research and support research culture
- Ensure our patients and the public (including carers, relatives of patients and service users and health volunteers) are given the opportunity to participate in health and social care research. And that they are involved in its design, management, conduct and dissemination of research.
- Ensure that Powys residents have equitable access to participating in clinical trials in commissioned services

### **4. Developing strong and effective partnerships across the health and care system with academic, healthcare, industry and research organisations.**

- From our position in Powys and our unique remote, rural context we will work with our regional and national partners to align our Research with our clinical services and needs of the community.
- We aim to embed research into practice, and by engaging with our local and national system partners and fostering relationships with neighbouring health boards and academic institution.
- We will work in close partnership across the breadth of the Health & Care system with our local and national organisations and systems, with funders and service providers and most importantly with service users, carers and staff.