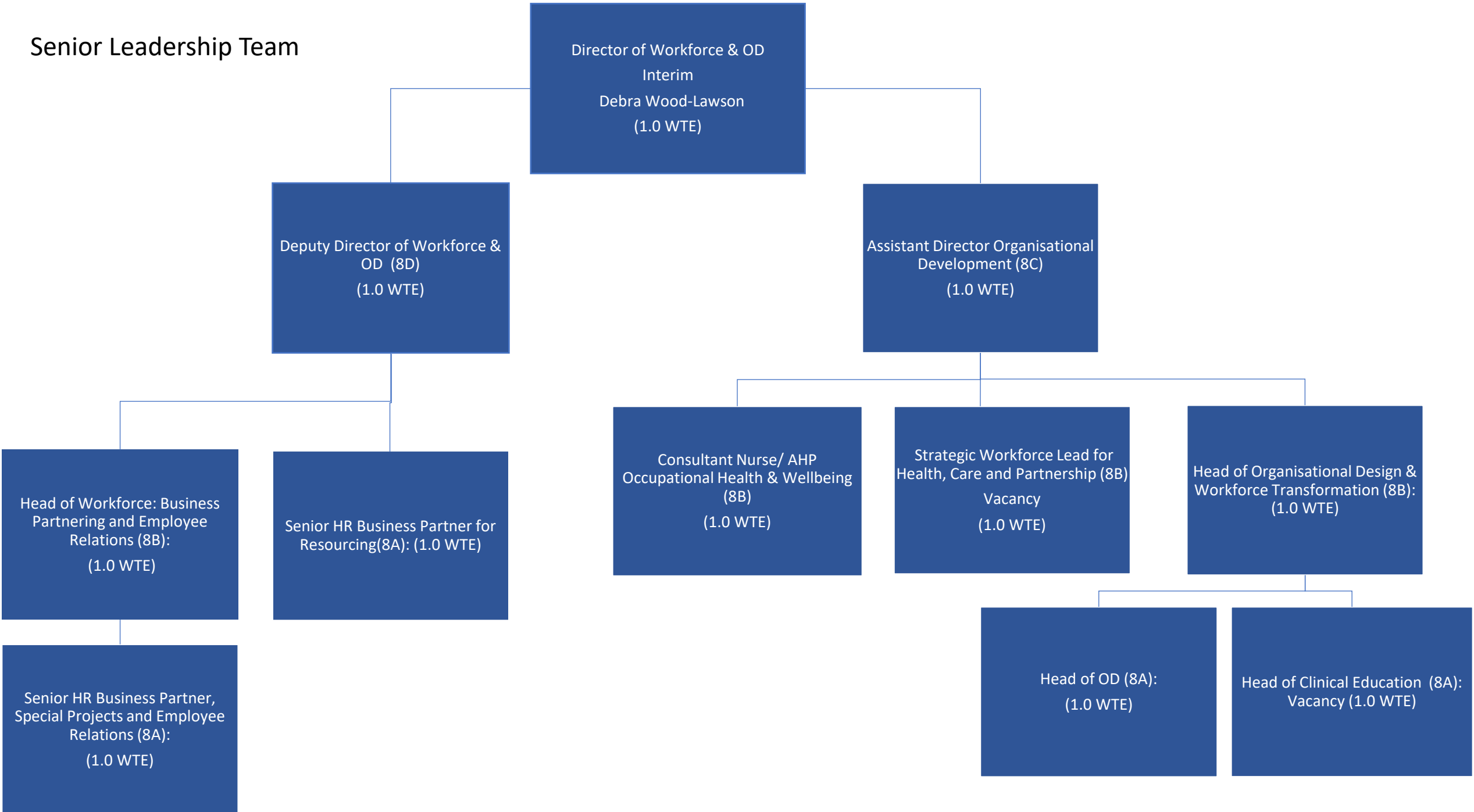


WOD Structure

Senior Leadership Team



Director of Workforce & OD
Interim
Debra Wood-Lawson
(1.0 WTE)

Deputy Director of Workforce &
OD (8D)
(1.0 WTE)

Assistant Director Organisational
Development (8C)
(1.0 WTE)

Head of Workforce: Business
Partnering and Employee
Relations (8B):
(1.0 WTE)

Senior HR Business Partner for
Resourcing(8A): (1.0 WTE)

Consultant Nurse/ AHP
Occupational Health & Wellbeing
(8B)
(1.0 WTE)

Strategic Workforce Lead for
Health, Care and Partnership (8B)
Vacancy
(1.0 WTE)

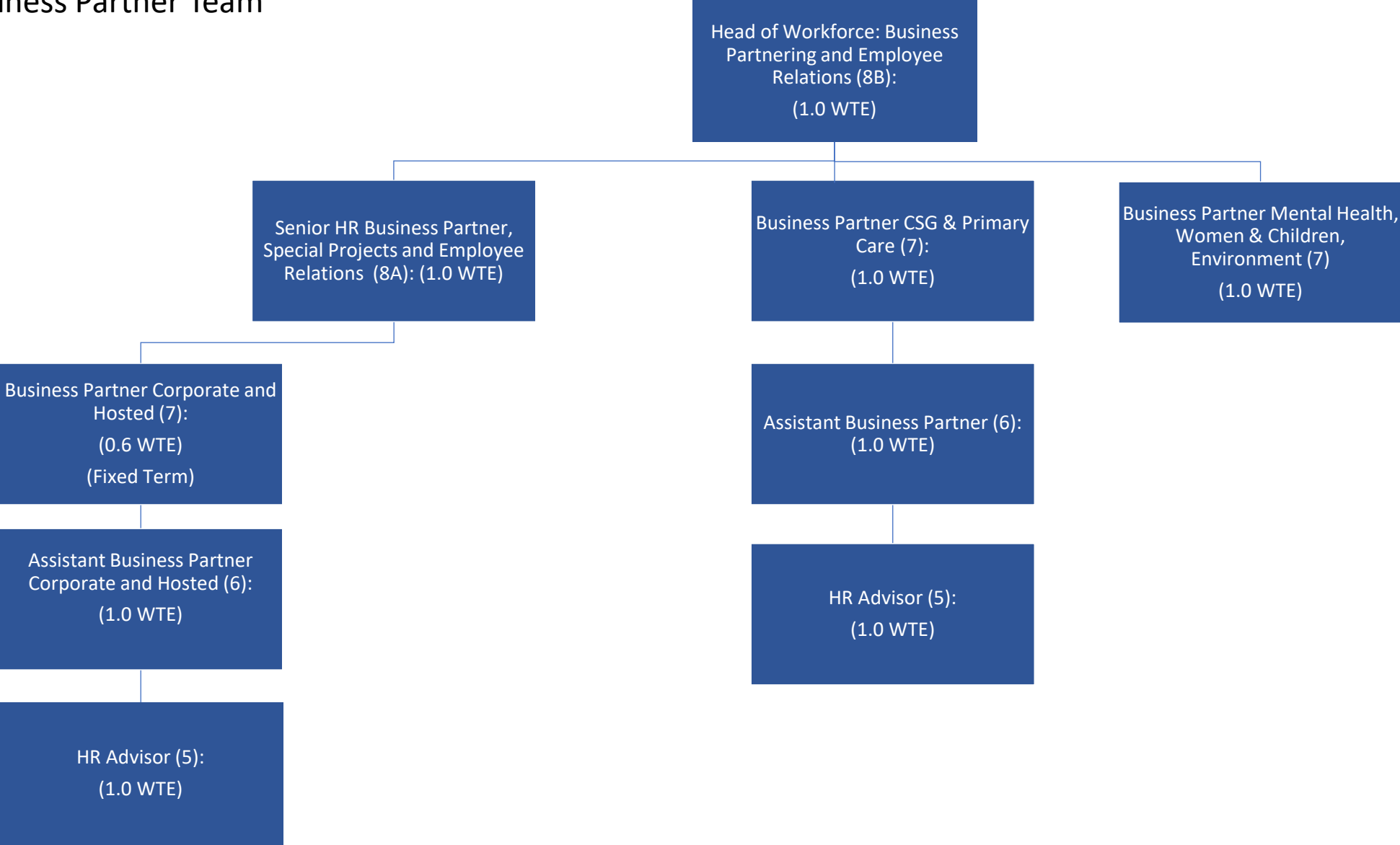
Head of Organisational Design &
Workforce Transformation (8B):
(1.0 WTE)

Senior HR Business Partner,
Special Projects and Employee
Relations (8A):
(1.0 WTE)

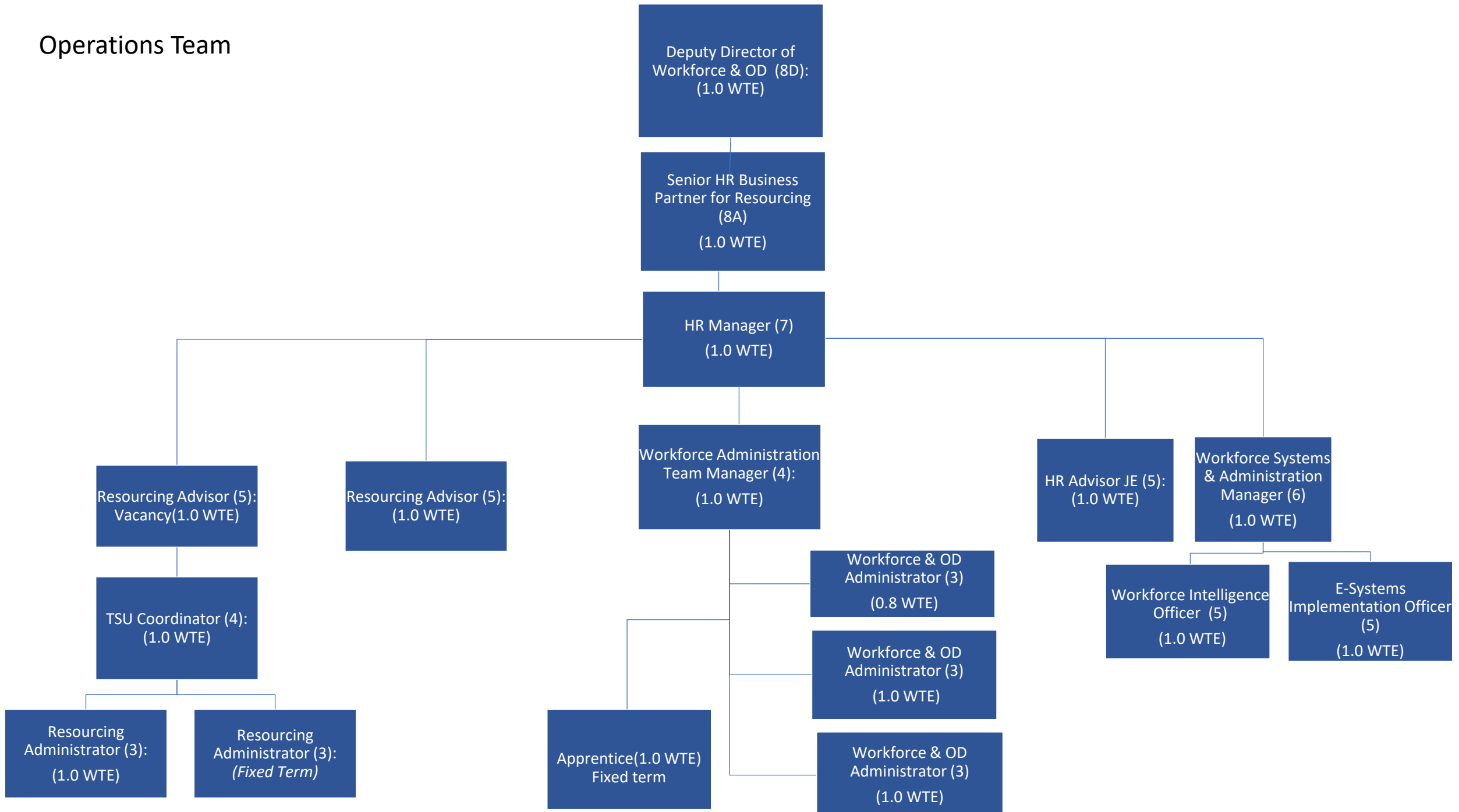
Head of OD (8A):
(1.0 WTE)

Head of Clinical Education (8A):
Vacancy (1.0 WTE)

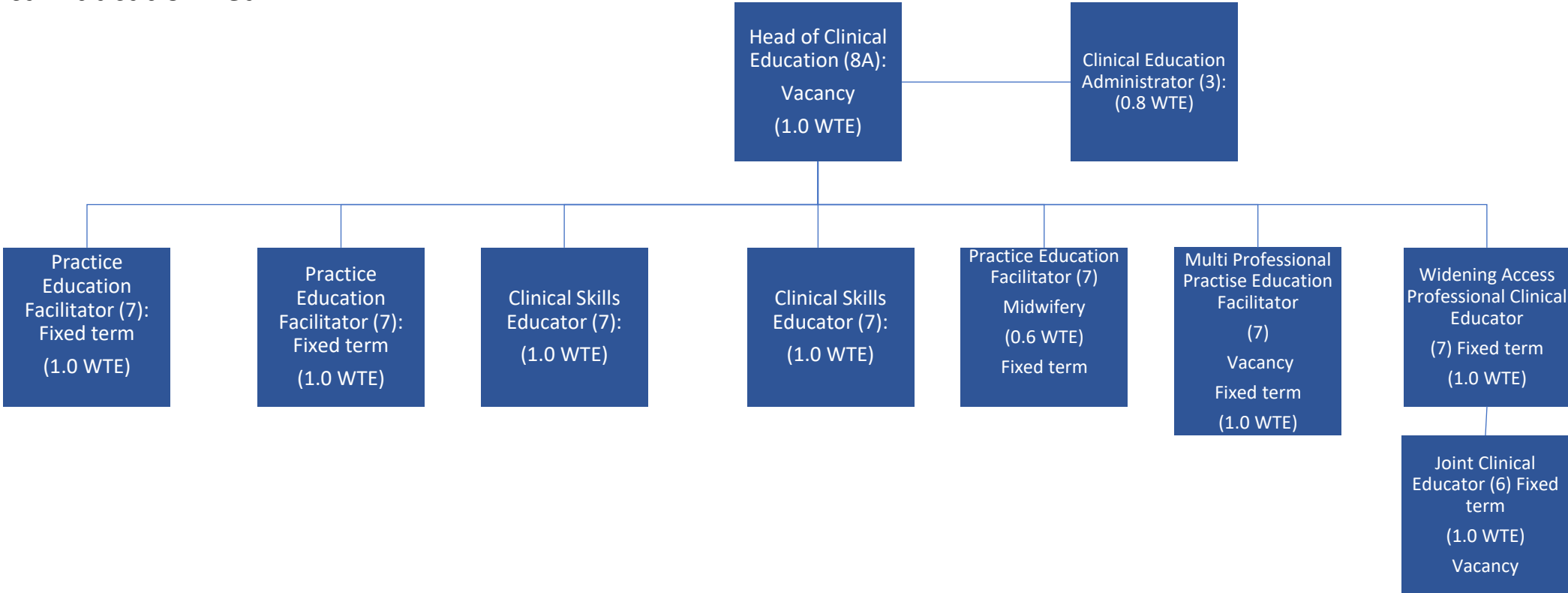
Business Partner Team



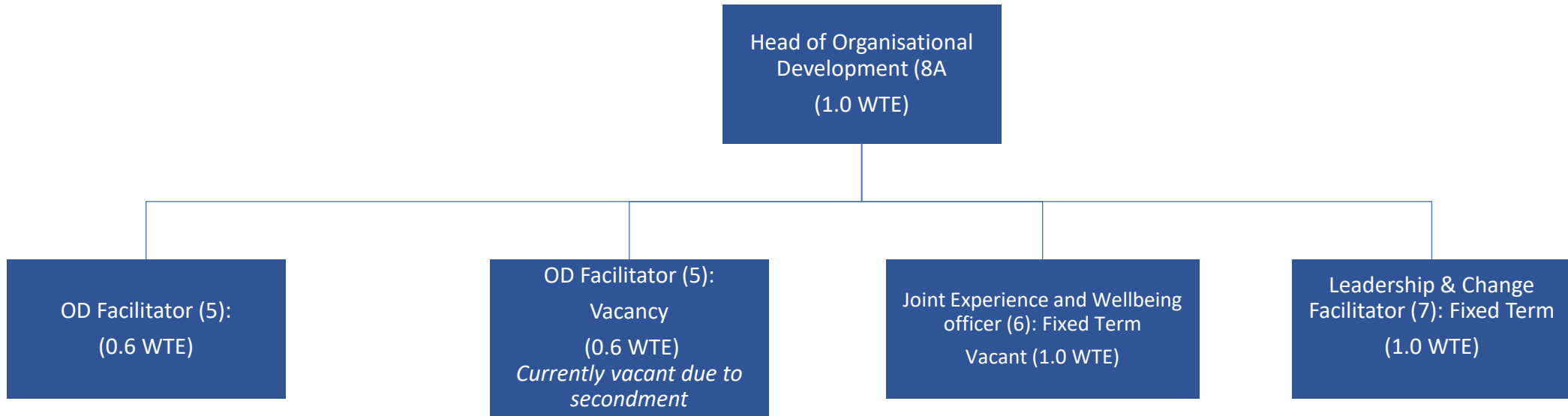
Operations Team



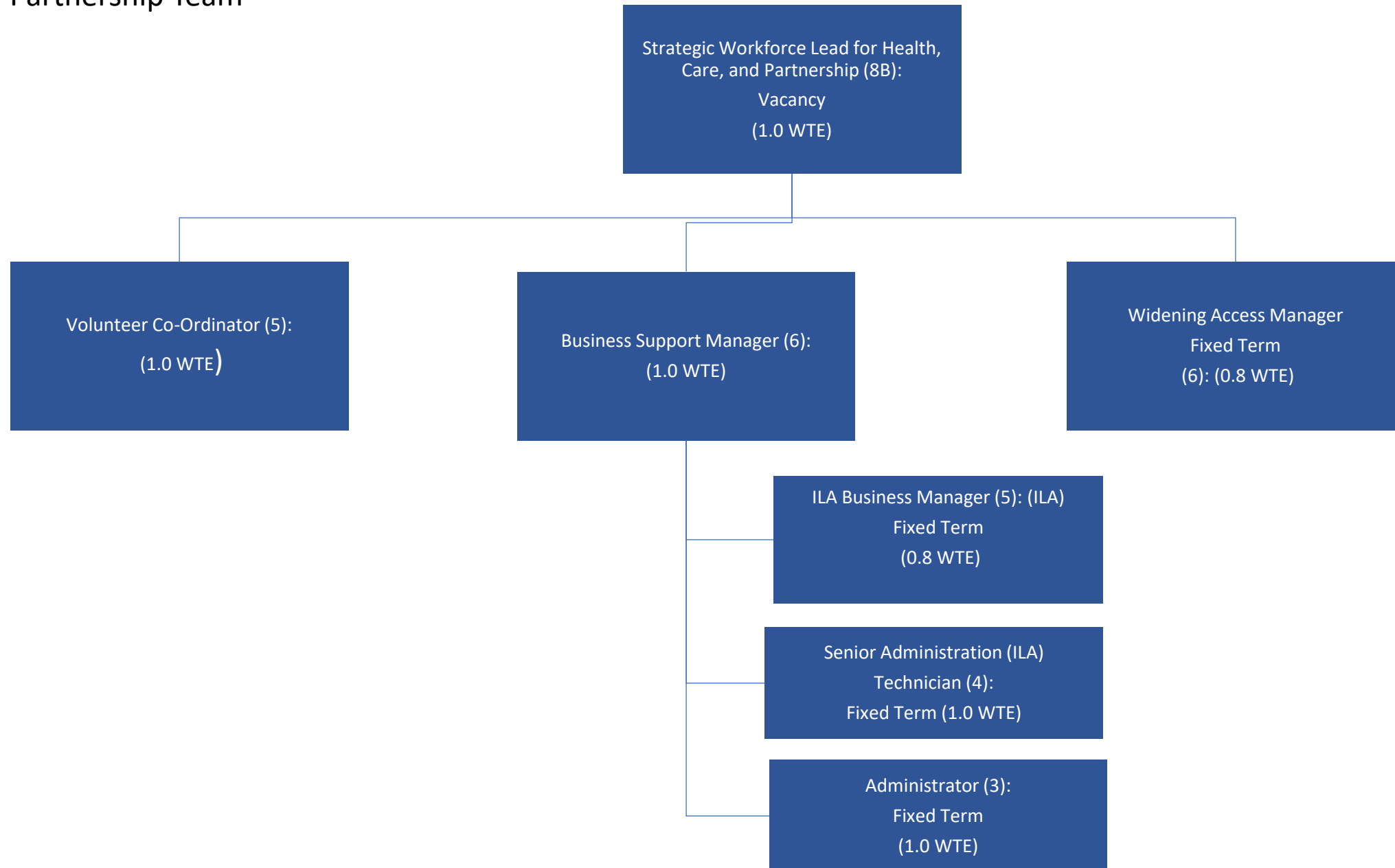
Clinical Education Team



Organisational Development Team



Partnership Team



Occupational Health

Assistant Director
Organisational Development
(8C):
(1.0 WTE)

Consultant Nurse/ AHP
Occupational Health and
Wellbeing (8B):
(1.0 WTE)

Occupational Health Speciality
Doctor:
(0.05 WTE)

Occupational Health
Consultant Physician:
(0.25WTE)

Occupational Health Nurse (6):
(0.8 WTE)

Occupational Health Nurse (6):
Vacant
(0.6 WTE)

Occupational Wellbeing &
Service Improvement Manager
(7):
(0.8 WTE)

Occupational Health
Administration Assistant (3):
(1.0 WTE)

Occupational Health
Administration Assistant (3):
(0.6 WTE)

Occupational Health
Administration Assistant (3):
(0.8 WTE)